

February, 2026, at 5:00 PM



# STARK AREA REGIONAL TRANSIT AUTHORITY

BOARD OF TRUSTEES  
MEETING

**Stark Area Regional Transit Authority  
Board of Trustees Meeting  
February 5, 2026 @ 5:00 PM  
Regular Meeting**

Mr. Reinhard called the meeting to order at 5:03 PM.

**Attendance**

**Board** (Quorum Present)

James Reinhard (Vice President), Gregory Blasiman, Margaret Egbert, Christopher Nichols, Rex Morey, NaSheka Combs-Lemon, Chet Warren, and Myra Watkins

**Staff**

Ralph Lee (Interim CEO/Executive Director), Mark Finnicum (Chief Operations Officer), Craig Smith (Director, IT), Clayton Popik (Director, Planning), Tammy Marie Brown (Director, HR), Joe Wayne (Chief Financial Officer), and Sheila Gines (Executive Assistant)

**Other**

Andrew Burton (Schulman, Roth and Associates CO., L.P.A.)

---

**Administer The Oath Of Office – Stephan Babik**

Commissioner Alan Harold administered the official oath of office to Stephan Babik, who was appointed by the Stark County Commissioners, and affirmed his commitment to faithfully execute the duties and responsibilities of his respective office.

**Board Committee Nominations**

- Mr. Blasiman nominated himself, Gregory Blasiman, as Board President, and James Reinhard to remain as Board Vice President for the year 2026.

Mr. Nichols moved to accept Gregory Blasiman as Board President for the year 2026. Ms. Combs-Lemon seconded the motion; the vote passed unanimously.

Mr. Warren moved to accept James Reinhard's nomination to remain as Board Vice President for 2026. Mr. Morey seconded the motion; the vote passed unanimously.

**The Executive Session began at 5:08 PM and ended at 5:20 PM.**

Mr. Reinhard called for an Executive Session for:

- Appointment, employment, dismissal, discipline, promotion, demotion, or compensation of a public employee.

Ms. Egbert moved to exit the executive session. Mr. Morey seconded the motion; the vote passed unanimously.

## **Secretary – Treasurer**

Mr. Blasiman asked for a motion to appoint Joe Wayne, Chief Financial Officer, as Secretary-Treasurer, with the responsibilities and authority outlined in the company's bylaws and relevant policies.

Ms. Egbert moved to appoint Joe Wayne, Chief Financial Officer, as Secretary-Treasurer. Ms. Combs-Lemon seconded the motion; the vote passed unanimously.

## **Approval/Correction of Minutes**

### *December 12, 2025 – Regular Meeting*

Mr. Nichols moved to adopt the minutes of December 12, 2025. Ms. Egbert seconded the motion; Mr. Babik abstained. The vote passed.

### *January 14, 2026 – Special Meeting*

Mr. Morey moved to adopt the minutes of January 14, 2026. Ms. NaSheka Combs-Lemon seconded the motion; Mr. Babik abstained. The vote passed.

## **Public Speaks**

Mr. Michael Brand expressed his appreciation for the opportunity to serve in a lead position during a critical period. Mr. Brand thanked the Board and the Executive Team for respecting his decision to return to his role as General Accounting Manager.

## **Board Committee Communication & Updates**

- Mr. Reinhard confidently stated that the latest data reveal a financially and strategically sound five (5) year plan. This plan aims to use the requested additional levy funds to yield the best returns for both the company and the community. He believes that Mr. Lee's leadership, along with his executive team, is effectively collaborating to plan and allocate resources in the most efficient way possible.

## **Departmental Reports**

- **Transportation & Maintenance**
  - Ridership has decreased, which we attribute to the pullback of Proline and the discontinuation of five (5) routes. However, this has also led to a reduction in overtime hours.
  - The Canton City School students are benefiting from the program that allows them to ride SARTA buses by showing their school ID. We will continue to reach out to other schools to present the program to them as well.

- The Stark State ridership has increased by about 22,000 rides over last year's numbers. We have a meeting scheduled with Kent Stark next week to discuss possibly implementing a program for their students. Previously, we met with Mount Union to demonstrate that their students are using the bus system but would benefit from a supporting program.
  - We initially had the Proline and Proline Plus runs created separately, but after our review, we realized that merging the two into mixed runs created efficiency and cost effectiveness and made the change in runs for this reason.
  - There has been an increase in maintenance costs, primarily due to four engine repairs.
  - Four of the new buses we received have successfully passed post-delivery inspections and will soon be going into service.
  - We are currently looking for two (2) technicians.
- **Finance**
    - Mr. Wayne presented the preliminary financial statements for December.
    - The preliminary increase in net position for 2025 is \$225,575.
    - SARTA's tax revenues for 2025 are \$19,929,763, an increase from \$19,216,960 in 2024.
    - There are three adjustments for 2025: finalization of pension accounting, sales tax actuals for November and December 2025, and additional health insurance claims with service dates by December 31, 2025.
- **Planning**
    - Proline Plus will be extending hours from 7 AM to 7 PM to 6 AM to 8 PM Monday through Friday.
    - Introduce services to Canal Fulton in response to concerns raised by the Mayor during several public comment sessions held by SARTA throughout late 2024 and 2025. A) Pilot a response service in Canal Fulton to provide public transportation access for residents without disabilities, like what the Proline ADA and Proline Plus services have historically offered. B) Launch a Community Coach service in Canal Fulton to ensure that residents who do not drive can access the senior center once a week, as well as have transportation to a local Walmart for grocery, retail, and pharmaceutical needs.
    - End Route 4 - Cleveland Express due to low ridership and high costs. The route was previously supplemented by the Veterans' Service Commission of Stark County (VSC), which has decided to pursue a different transportation approach.

- **Customer Relations**
  - Mr. Lee reported on behalf of Ms. Virola of the marketing campaign “SARTA me,” collaborating with Mayor Sherer and many others, and is showing that it is a successful campaign. The advertisement is being shared on billboards, on the radio, in TV commercials, and on SARTA’s social media.
  - In celebration of Ohio Loves Transit Week, SARTA will offer free rides on February 13<sup>th</sup> for everyone.
  
- **Information Technology**
  - The IT department is continuing its work on testing the new Enterprise Resource Planning (ERP) software replacement and configuring user permissions. Mr. Smith is very pleased with the progress made so far. The finance team members are actively working through their test scripts to ensure that everything functions as expected. IT is also focusing on user security to ensure that individuals have appropriate access related to their job duties. Joe's team has been excellent to work with throughout this entire process, and we greatly appreciate their support.
  - Additionally, the implementation of the Workforce Management software is progressing well. This system will reduce reliance on paper by digitizing processes, improving efficiency for our teams in maintenance, dispatch, and operations.
  
- **Human Resources**
  - Several updates have been made to both the policy and employee handbooks (Bargaining & Non-Bargaining), which are being presented to the Board tonight in a resolution.
  - A new class of CDL-operators will begin on Monday, February 9<sup>th</sup>.
  - Several months ago, we held a demonstration at SARTA showcasing accident-avoidance technology. The team has been here all week, applying the technology to the buses and working with our agency trainers to map and train on the vehicles.
  - We held several training meetings on various topics, including SARTA’s new Mission, Vision, and Cornerstone Values. Joe presented an unprecedented financial overview, offering a clear and transparent view of our financial situation. Additionally, we conducted our annual EEO training, along with several other topics.

- **Executive Director/CEO Communications & Updates**

- As Ms. Brown mentioned, I presented the new SARTA Mission, Vision, and Cornerstone Values. I encouraged everyone to shift their mindset so that we can move forward together and successfully align with these principles. SARTA is a great place to work. I stated that if anyone has any concerns, please feel free to speak with me. I am open to reaching a mutual agreement. The entire team is always available, so don't hesitate to reach out to any of us.
- We recently visited PARTA to strengthen our connections and relationships while learning about effective practices in the transportation industry. This is part of our effort to enhance SARTA both internally and externally. Previously, we conducted an onsite visit with Akron Metro, and next Thursday we will visit COTA. We will continue to collect information to ensure we are making the right decisions for SARTA. Additionally, we are planning to visit TARTA soon.
- SARTA provided free rides to individuals heading to warming centers and opened our transit centers earlier for this purpose.
- We distributed clear talking points regarding allowable discussions during company time. Many employees are eager to promote voting in a proper way.
- Our Levy fundraiser, *Pouring With A Purpose*, raised approximately \$24,000. A personal thank you to NaSheka for serving as one of our esteemed bartenders.
- Ralph wants to honor Ronald Macala for his significant contributions to the organization and his leadership of the Board of Trustees. He wishes to express his gratitude in a meaningful way. We will start discussions on this and share updates as they become available.

## **Resolutions**

### **#2 – A Resolution To Dispose Of Obsolete And Unusable Vehicles**

Mr. Morey moved to adopt the resolution. Ms. Combs-Lemon seconded the motion; the vote passed unanimously.

### **#3 – Adopting A Whistleblower Policy**

Ms. Egbert moved to adopt the resolution. Mr. Warren seconded the motion; the vote passed unanimously.

### **#4 – Implementing An AI Policy**

Ms. Egbert moved to adopt the resolution. Mr. Warren seconded the motion; the vote passed unanimously.

#### **#5 – Updating SARTA Policies And Handbooks**

- Absence Control – Union
- Credit Card
- FMLA – Union (Bargaining)
- FMLA – Administrative (Non-Bargaining)
- Nepotism
- Major Service & Fare Change
- Short Term Disability – Union (Bargaining)
- Short Term Disability – Administrative (Non-Bargaining)
- Travel
- Handbook – Union (Bargaining)
- Handbook – Administrative (Non-Bargaining)

Agenda was amended in the Resolutions section, letter e) Handbook – Union (Bargaining) and f) Handbook – Administration (Non-Bargaining), to indicate that Handbooks should be included in the list of updates.

Ms. Egbert moved to adopt the resolution. Mr. Morey seconded the motion; the vote passed unanimously.

#### **#6 – A Resolution Authorizing The Executive Director/CEO To Apply For Better Utilizing Investments To Leverage Development (BUILD) Grant Program**

Ms. Egbert moved to adopt the resolution. Ms. Watkins seconded the motion; the vote passed unanimously.

#### **#7 – Approving Changes Within SARTA’s Organizational Structure**

Mr. Warren moved to adopt the resolution. Ms. Egbert seconded the motion; the vote passed unanimously.

#### **Adjournment**

Mr. Warren moved to adjourn the meeting at 6:41 PM. Ms. Egbert seconded; the vote passed unanimously.

# Transportation & Maintenance

Mark Finnicum  
Chief Operations Officer



STARK AREA REGIONAL TRANSIT AUTHORITY  
MAINTENANCE DEPARTMENT

January 2026

Submitted by: Mark Finnicum

Transportation

- Ridership was down on both fixed route and proline for the month of January due to multiple days of bad weather and extreme cold.
- SARTA continues to provide free rides to and from area warming shelters around the county.
- To improve on ride efficiencies, we started combining Proline and Proline Plus trips. This allows vehicles in certain regions of the county to be used for both purposes without requiring a backtrack.
- Human Resources is in the process of hiring operators to help reduce the amount of overtime that has been paid out so far this year.
- Both Stark State College and Canton City Schools ridership continues to increase in 2026. SARTA met with Kent State and proposed allowing students to access all fixed-route services with a valid student ID.

## SARTA RIDERSHIP REPORT

January 2026

2026 Operating Days 21 Weekdays, 5 Saturdays

2025 Operating Days 22 Weekdays, 4 Saturdays

<b><i>Ridership</i></b>	<b>CURRENT MO.</b>				<b>YTD</b>		<b>PRIOR YTD</b>	
	<b>2026</b>	<b>2025</b>	<b>change</b>	<b>%</b>	<b>2026</b>	<b>2025</b>	<b>change</b>	<b>%</b>
Fixed Route	99,361	102,112	-2,751	-2.69%	99,361	102,112	-2,751	-2.69%
Other Revenue	622	653	-31	-100.00%	622	653	-31	-4.75%
Paratransit	5,673	9,239	-3,566	-38.60%	5,673	9,239	-3,566	-38.60%
CS-Out of county	0	0	0	0.00%	0	0	0	0.00%
<b>Total</b>	<b>105,656</b>	<b>112,004</b>	<b>-6,348</b>	<b>-5.67%</b>	<b>105,656</b>	<b>112,004</b>	<b>-6,348</b>	<b>-5.67%</b>

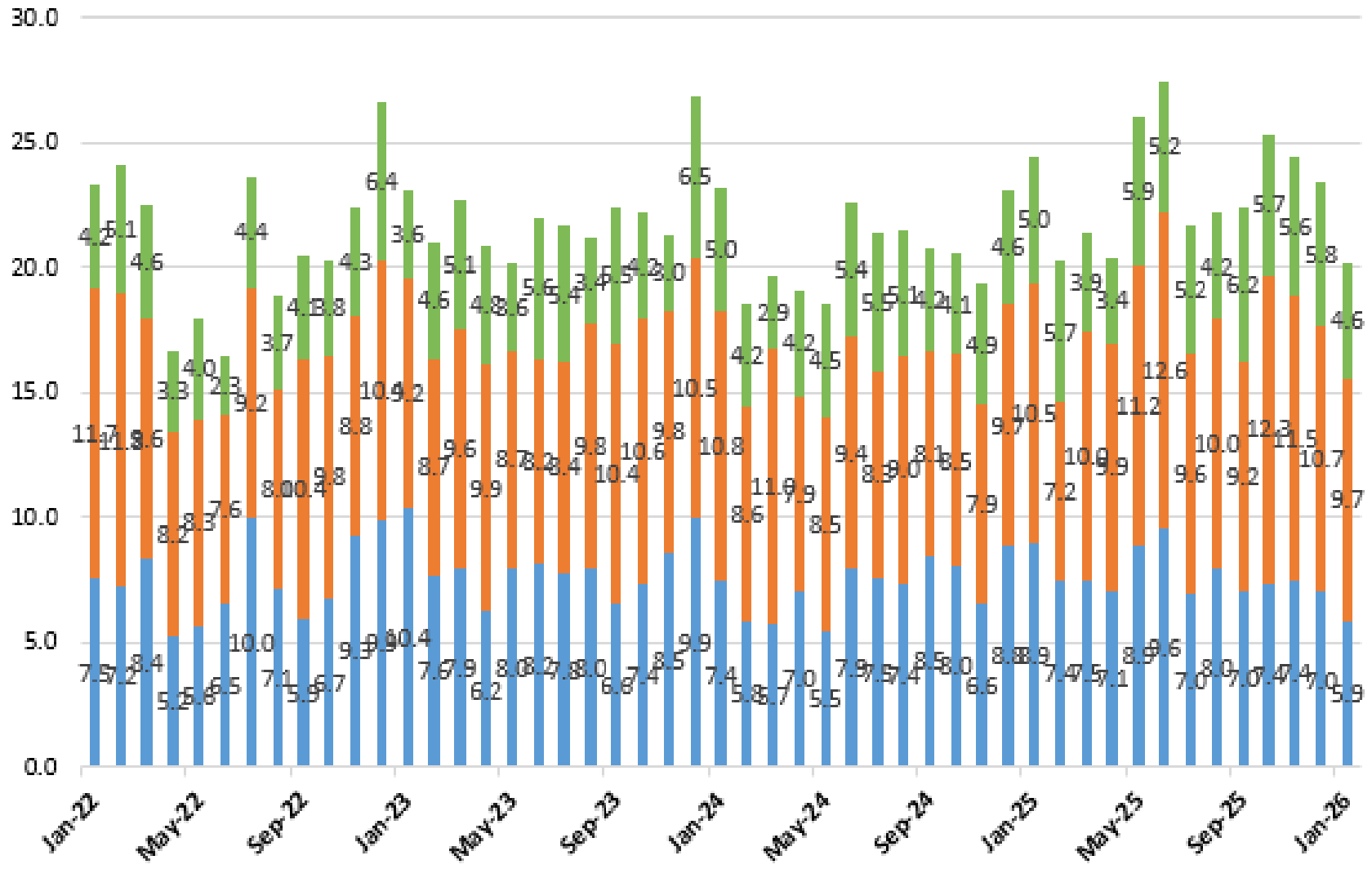
<b><i>Vehicle Operations</i></b>	<b>CURRENT MO.</b>				<b>YTD</b>		<b>YTD</b>	
	<b>2026</b>	<b>2025</b>	<b>change</b>	<b>%</b>	<b>2026</b>	<b>2025</b>	<b>change</b>	<b>%</b>
Mileage								
Fixed Route	189,296	205,379	-16,083	-7.83%	189,296	205,379	-16,083	-7.83%
Other Revenue	1,472	1,569	-97	-100.00%	1,472	1,569	-97	-6.18%
Fixed Deadhead	8,636	9,705	-1,069	-11.01%	8,636	9,705	-1,069	-11.01%
Paratransit	57,681	94,013	-36,332	-38.65%	57,681	94,013	-36,332	-38.65%
CS-Out of county	0	0	0	0.00%	0	0	0	0.00%
Para Deadhead	8,367	15,275	-6,908	-45.22%	8,367	15,275	-6,908	-45.22%
<b>Total</b>	<b>265,452</b>	<b>325,941</b>	<b>-60,489</b>	<b>-18.56%</b>	<b>265,452</b>	<b>325,941</b>	<b>-60,489</b>	<b>-18.56%</b>

<b><i>Hours</i></b>	<b>CURRENT MO.</b>		<b>PRIOR YR.</b>		<b>YTD</b>			
	<b>2026</b>	<b>2025</b>	<b>change</b>	<b>%</b>	<b>2026</b>	<b>2025</b>	<b>change</b>	<b>%</b>
Fixed Route	11,623	12,351	-728	-5.89%	11,623	12,351	-728	-5.89%
Other Revenue	33	32	1	3.03%	33	32	1	3.13%
Paratransit	3,455	5,220	-1,765	-33.81%	3,455	5,220	-1,765	-33.81%
CS-Out of county	0	0	0	0.00%	0	0	0	0.00%
<b>Total</b>	<b>15,111</b>	<b>17,603</b>	<b>-2,492</b>	<b>-14.16%</b>	<b>15,111</b>	<b>17,603</b>	<b>-2,492</b>	<b>-14.16%</b>

## PROLINE INFRACTIONS DARA - PER 1000 ATTEMPTS

■ NO SHOW - RATE     
 ■ LATE CANCEL - RATE     
 ■ CANCEL AT THE DOOR - RATE



## 2026 Proline "Shared Ride" Service Statistics

Month	Trips Scheduled	Advanced Cancels	Same Day Cancels	No - Shows	Late Cancels	Cancels at the Door	Total Performed Trips	Vehicle Miles	Miles per Trip
January	6,296	1,011	526	37	61	29	4,632	65,786	14.20
February	-	-	-	-	-	-	-	-	0.00
March	-	-	-	-	-	-	-	-	0.00
April	-	-	-	-	-	-	-	-	0.00
May	-	-	-	-	-	-	-	-	0.00
June	-	-	-	-	-	-	-	-	0.00
July	-	-	-	-	-	-	-	-	0.00
August	-	-	-	-	-	-	-	-	0.00
September	-	-	-	-	-	-	-	-	0.00
October	-	-	-	-	-	-	-	-	0.00
November	-	-	-	-	-	-	-	-	0.00
December	-	-	-	-	-	-	-	-	0.00
<b>Year to Date Totals</b>	<b>6,296</b>	<b>1,011</b>	<b>526</b>	<b>37</b>	<b>61</b>	<b>29</b>	<b>4,632</b>	<b>65,786</b>	<b>14.20</b>

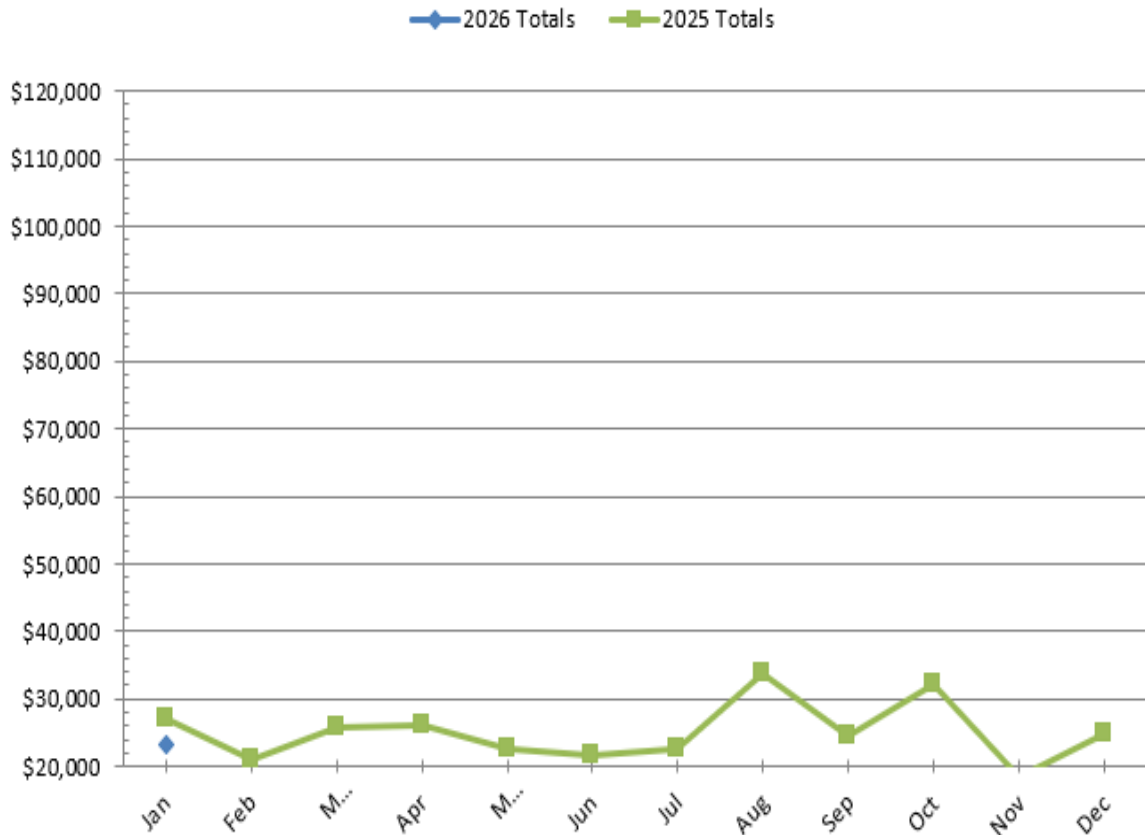
### Proline "Shared Ride" Service Statistics for the month of

Month	Trips Scheduled	Advanced Cancels	Same Day Cancels	No - Shows	Late Cancels	Cancels at the Door	Total Performed Trips	Vehicle Miles	Miles per Trip
January	6,296	1,011	526	37	61	29	4,632	65,786	14.20

### Pass/Ticket Sales Comparison, 2026 - 2025

2026	2026 Totals	2025	2025 Totals	Percent changed
Jan	\$23,193.29	Jan	\$27,086.00	-14.37%
Feb		Feb	\$21,117.00	
Mar		Mar	\$25,658.80	
Apr		Apr	\$26,145.55	
May		May	\$22,690.30	
Jun		Jun	\$21,630.20	
Jul		Jul	\$22,512.50	
Aug		Aug	\$33,824.27	
Sep		Sep	\$24,471.21	
Oct		Oct	\$32,231.55	
Nov		Nov	\$18,378.00	
Dec		Dec	\$25,198.00	
Year-to-Date	\$23,193.29	Year-to-Date	\$27,086.00	-14.37%

### Pass/Ticket Sales Comparison, 2026 - 2025



<b>Stark State College</b>				
	2026	2025	Change	
	<b>System Wide</b>	<b>System Wide</b>	<b>System</b>	<b>%</b>
January	1,791	1,268	523	41.25%
February		1,868	1,868	-100.00%
March		1,913	1,913	-100.00%
April		1,978	1,978	-100.00%
May		1,368	1,368	-100.00%
June		1,403	1,403	-100.00%
July		1,491	1,491	-100.00%
August		1,758	1,758	-100.00%
September		2,743	2,743	-100.00%
October		2,419	2,419	-100.00%
November		1,754	1,754	-100.00%
December		1,670	1,670	-100.00%
<b>Totals</b>	<b>1,791</b>	<b>1,268</b>	<b>523</b>	<b>41.25%</b>

<b>Canton City Schools</b>				
	2026	2025	Change	
	<b>System Wide</b>	<b>System Wide</b>	<b>System</b>	<b>%</b>
January	3,816	1,759	2,057	100.00%
February		2,601	2,601	100.00%
March		2,974	2,974	100.00%
April		3,456	3,456	100.00%
May		3,313	3,313	100.00%
June		2,591	2,591	100.00%
July		2,213	2,213	100.00%
August		2,484	2,484	100.00%
September		4,120	4,120	100.00%
October		4,413	4,413	100.00%
November		3,419	3,419	100.00%
December		3,626	3,626	100.00%
<b>Totals</b>	<b>3,816</b>	<b>1,759</b>	<b>2,057</b>	<b>100.00%</b>

## 2026-2025 Year to Date Ridership by Route

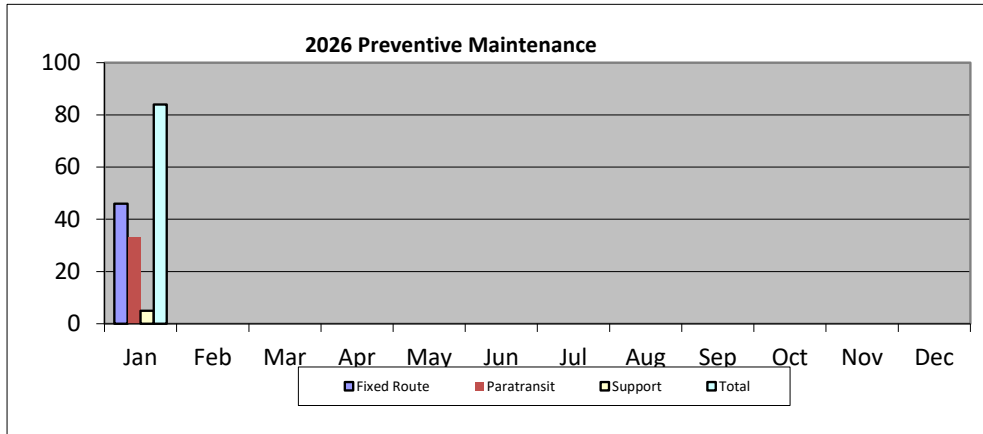
Route	January 2026	January 2025	Difference	Percentage Change
4	160	187	-27	-14.44%
45	2,076	2,163	-87	-4.02%
81	6,035	6,244	-209	-3.35%
101	3,879	4,054	-175	-4.32%
102	17,640	17,856	-216	-1.21%
103	3,866	3,934	-68	-1.73%
105	6,857	6,035	822	13.62%
106	7,278	6,520	758	11.63%
107	3,088	3,523	-435	-12.35%
108	4,806	4,148	658	15.86%
110	5,940	6,627	-687	-10.37%
111	3,113	3,739	-626	-16.74%
113	3,551	2,468	1,083	43.88%
114	1,879	1,824	55	3.02%
117	3,754	4,150	-396	-9.54%
118	2,303	2,422	-119	-4.91%
119	4,525	4,384	141	3.22%
121	1,515	1,164	351	30.15%
124	1,370	1,543	-173	-11.21%
125	1,580	1,447	133	9.19%
126	924	1,015	-91	-8.97%
128	1,610	1,204	406	33.72%
130	1,614	1,143	471	41.21%
131	3,155	4,019	-864	-21.50%
132	0	1,290	-1,290	-100.00%
139	6,152	6,477	-325	-5.02%
151	0	546	-546	-100.00%
152	0	597	-597	-100.00%
153	0	527	-527	-100.00%
157	0	220	-220	-100.00%
158	0	196	-196	-100.00%
<b>Total</b>	<b>98,670</b>	<b>101,666</b>	<b>-2,996</b>	<b>-2.95%</b>

**STARK AREA REGIONAL TRANSIT AUTHORITY**  
**MAINTENANCE DEPARTMENT**  
January 2026  
Submitted by: Mark Finnicum

- Preventive maintenance costs increased in January due to the purchase of a catalytic converter for a Gillig bus and the engine repairs on the Ford EH vans. We have identified a local vendor who can rebuild the catalytic converter and enable the units to be reused.
  - We are continuing to replace/rebuild the engines on the Ford paratransit vehicles. We are using this as part of our in-house training that is required for technicians to advance.
  - The three Gillig buses have been placed into revenue service and will be wrapped soon.
  - We currently have an opening for a maintenance technician that we are working with HR to fill. We are continuing to work with RG Drage to assist in the hiring process.
1. There was a total of 84 Preventive Maintenance Inspections
    - 46 Fixed Route Buses
    - 33 Paratransit Buses
    - 05 Support Vehicle
  2. There was a total of 84 Wheelchair Inspections
  3. There was a total of 15 Road Calls
    - 14 Fixed Route Buses – 14 Towed
    - 00 Non-Revenue Vehicle – 00 Towed
    - 01 Paratransit Buses – 01 Towed
  4. There was a total of 12 Warranty Repair
  5. There were 00 job-related injuries reported

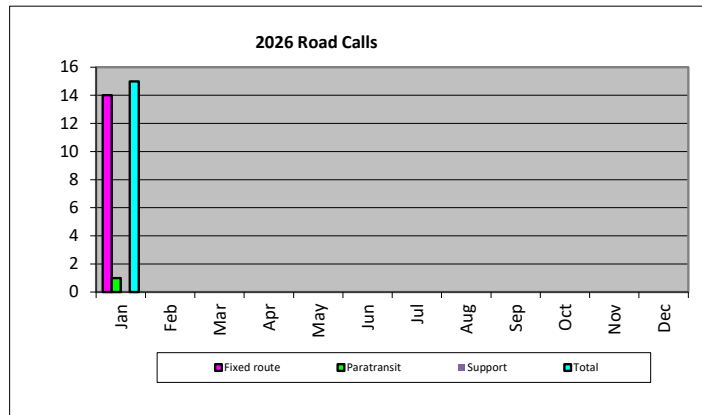
**Preventive Maintenance Inspections**

2026	Fixed Route	Paratransit	Support	Total
Jan	46	33	5	84
Feb				
Mar				
Apr				
May				
Jun				
Jul				
Aug				
Sep				
Oct				
Nov				
Dec				



**Road calls**

2026	Fixed route	Paratransit	Support	Total
Jan	14	1	0	15
Feb				
Mar				
Apr				
May				
Jun				
Jul				
Aug				
Sep				
Oct				
Nov				
Dec				



<b>2026</b>	<b>Preventive Maintenance Costs</b>	<b>Repair Costs</b>	<b>Total</b>	<b>Diesel Gallons Used 2025</b>	<b>Diesel Gallons Used 2026</b>	<b>SARTA CNG GGE Used 2025</b>	<b>SARTA CNG GGE Used 2025</b>	<b>CNG Public Use GGE 2025</b>	<b>CNG Public Use GGE 2026</b>	<b>Hydrogen Usage KG 2025</b>	<b>Hydrogen Usage KG 2026</b>
Jan	\$19,201.04	\$124,734.67	\$143,935.71	547	62	56,647	49,526	2,781	2,282	2,995	2,733
Feb				14		48,790		1,354		4,006	
Mar				4		47,588		979		5,841	
Apr				12		48,261		552		5,220	
May				130		47,564		983		3,649	
Jun				110		50,844		1,397		5,367	
Jul				144		53,791		1,849		4,443	
Aug				41		50,313		3,044		4,545	
Sep				160		50,900		1,884		3,792	
Oct				61		51,282		1,812		6,653	
Nov				85		45,728		925		3,896	
Dec				7		51,886		1,065		3,714	
<b>Total</b>	<b>\$19,201.04</b>	<b>\$124,734.67</b>	<b>\$143,935.71</b>	<b>547</b>	<b>62</b>	<b>603594</b>	<b>49526</b>	<b>18625</b>	<b>2282</b>	<b>54121</b>	<b>2733</b>
<i>Month Avg.</i>	<i>\$1,600.09</i>	<i>\$10,394.56</i>	<i>\$11,994.64</i>	<i>1,315.00</i>	<i>62</i>	<i>56,647</i>	<i>49,526</i>	<i>2,780.79</i>	<i>2,282</i>	<i>2,995</i>	<i>2,733</i>

GGE - Gasoline Gallon Equivalent

# Finance

Joe Wayne  
Chief Financial Officer



**Stark Area Regional Transit Authority**  
**Statement of Revenue Expenses, and Changes In Net Position**  
**January 2026 Budget vs Actual**

	January			1 Month		
	Actual	Budget	Difference	Actual	Budget	Difference
<b>OPERATING REVENUES:</b>						
Passenger fares	\$ 73,369	\$ 93,734	\$ (20,366)	\$ 73,369	\$ 93,734	\$ (20,366)
Special transit fares	26,637	34,554	(7,917)	26,637	34,554	(7,917)
Auxiliary transportation revenues	9,897	13,988	(4,091)	9,897	13,988	(4,091)
TOTAL OPERATING REVENUES	109,903	142,277	(32,373)	109,903	142,277	(32,373)
<b>OPERATING EXPENSES:</b>						
Labor	877,564	947,311	69,748	877,564	947,311	69,748
Benefits	794,330	863,254	68,925	794,330	863,254	68,925
Materials, supplies and training	318,789	345,292	26,503	318,789	345,292	26,503
ODOT fuel tax reimbursement	(302)	(400)	(99)	(302)	(400)	(99)
Services	84,253	169,250	84,997	84,253	169,250	84,997
Utilities	79,071	75,250	(3,821)	79,071	75,250	(3,821)
Casualty and liability insurance	67,480	73,333	5,854	67,480	73,333	5,854
Leases and rentals	-	-	-	-	-	-
Miscellaneous	423,783	235,858	(187,925)	423,783	235,858	(187,925)
TOTAL OPERATING EXPENSES EXCLUDING DEPRECIATION	2,644,967	2,709,149	64,182	2,644,967	2,709,149	64,182
OPERATING LOSS BEFORE DEPRECIATION	(2,535,063)	(2,566,872)	31,809	(2,535,063)	(2,566,872)	31,809
DEPRECIATION EXPENSE	706,716	656,667	(50,049)	706,716	656,667	(50,049)
OPERATING LOSS	(3,241,779)	(3,223,539)	(18,241)	(3,241,779)	(3,223,539)	(18,241)
<b>NON-OPERATING REVENUES (EXPENSES):</b>						
Sales tax revenues	1,639,306	1,361,184	278,122	1,639,306	1,361,184	278,122
Operating grants and reimbursements	489,952	1,161,343	(671,391)	489,952	1,161,343	(671,391)
Interest income	20,859	14,583	6,276	20,859	14,583	6,276
Sales tax collection expense	(16,393)	-	(16,393)	(16,393)	-	(16,393)
Gain (loss) on disposal of capital assets	-	-	-	-	-	-
Non-transportation revenues	2,077	7,942	(5,865)	2,077	7,942	(5,865)
TOTAL NON-OPERATING REVENUES (EXPENSES)-N	2,135,800	2,545,051	(409,251)	2,135,800	2,545,051	(409,251)
NET LOSS BEFORE CAPITAL GRANTS REVENUE	(1,105,979)	(678,487)	(427,492)	(1,105,979)	(678,487)	(427,492)
<b>CAPTIAL GRANTS:</b>						
Federal capital grants	108,306	452,021	(343,715)	108,306	452,021	(343,715)
State capital grants	23,952	31,099	(7,147)	23,952	31,099	(7,147)
TOTAL CAPITAL GRANTS	132,258	483,120	(350,862)	132,258	483,120	(350,862)
INCREASE (DECREASE) IN NET POSITION	(973,721)	(195,368)	(778,353)	(973,721)	(195,368)	(778,353)
NET POSITION, BEGINNING OF MONTH / YEAR	66,324,879			66,324,879		
NET POSITION, END OF YEAR	\$ 65,351,158			\$ 65,351,158		



**Stark Area Regional Transit Authority**  
**Statement of Revenue Expenses, and Changes In Net Position**  
**January 2026 and YTD Year Over Year**

	January			1 Month		
	2026	2025	Change	2026	2025	Change
<b>OPERATING REVENUES:</b>						
Passenger fares	\$ 73,369	\$ 85,639	\$ (12,271)	\$ 73,369	\$ 85,639	\$ (12,271)
Special transit fares	26,637	47,815	(21,178)	26,637	47,815	(21,178)
Auxiliary transportation revenues	9,897	3,120	6,777	9,897	3,120	6,777
<b>TOTAL OPERATING REVENUES</b>	<b>109,903</b>	<b>136,574</b>	<b>(26,671)</b>	<b>109,903</b>	<b>136,574</b>	<b>(26,671)</b>
<b>OPERATING EXPENSES:</b>						
Labor	877,564	943,010	65,447	877,564	943,010	65,447
Benefits	794,330	1,198,747	404,417	794,330	1,198,747	404,417
Materials, supplies and training	318,789	299,714	(19,074)	318,789	299,714	(19,074)
ODOT fuel tax reimbursement	(302)	(969)	(668)	(302)	(969)	(668)
Services	84,253	192,720	108,467	84,253	192,720	108,467
Utilities	79,071	74,791	(4,280)	79,071	74,791	(4,280)
Casualty and liability insurance	67,480	63,612	(3,868)	67,480	63,612	(3,868)
Leases and rentals	-	-	-	-	-	-
Miscellaneous	423,783	43,831	(379,952)	423,783	43,831	(379,952)
<b>TOTAL OPERATING EXPENSES EXCLUDING DEPRECIATION</b>	<b>2,644,967</b>	<b>2,815,456</b>	<b>170,490</b>	<b>2,644,967</b>	<b>2,815,456</b>	<b>170,490</b>
<b>OPERATING LOSS BEFORE DEPRECIATION</b>	<b>(2,535,063)</b>	<b>(2,678,882)</b>	<b>143,819</b>	<b>(2,535,063)</b>	<b>(2,678,882)</b>	<b>143,819</b>
<b>DEPRECIATION EXPENSE</b>	<b>706,716</b>	<b>617,045</b>	<b>(89,672)</b>	<b>706,716</b>	<b>617,045</b>	<b>(89,672)</b>
<b>OPERATING LOSS</b>	<b>(3,241,779)</b>	<b>(3,295,926)</b>	<b>54,147</b>	<b>(3,241,779)</b>	<b>(3,295,926)</b>	<b>54,147</b>
<b>NON-OPERATING REVENUES (EXPENSES):</b>						
Sales tax revenues	1,639,306	1,585,448	53,858	1,639,306	1,585,448	53,858
Operating grants and reimbursements	489,952	666,489	(176,537)	489,952	666,489	(176,537)
Interest income	20,859	13,782	7,077	20,859	13,782	7,077
Sales tax collection expense	(16,393)	(15,854)	(539)	(16,393)	(15,854)	(539)
Gain (loss) on disposal of capital assets	-	-	-	-	-	-
Non-transportation revenues	2,077	5,567	(3,490)	2,077	5,567	(3,490)
<b>TOTAL NON-OPERATING REVENUES (EXPENSES)-N</b>	<b>2,135,800</b>	<b>2,255,432</b>	<b>(119,631)</b>	<b>2,135,800</b>	<b>2,255,432</b>	<b>(119,631)</b>
<b>NET LOSS BEFORE CAPITAL GRANTS REVENUE</b>	<b>(1,105,979)</b>	<b>(1,040,495)</b>	<b>(65,484)</b>	<b>(1,105,979)</b>	<b>(1,040,495)</b>	<b>(65,484)</b>
<b>CAPTIAL GRANTS:</b>						
Federal capital grants	108,306	21,295	87,011	108,306	21,295	87,011
State capital grants	23,952	-	23,952	23,952	-	23,952
<b>TOTAL CAPITAL GRANTS</b>	<b>132,258</b>	<b>21,295</b>	<b>110,963</b>	<b>132,258</b>	<b>21,295</b>	<b>110,963</b>
<b>INCREASE (DECREASE) IN NET POSITION</b>	<b>(973,721)</b>	<b>(1,019,200)</b>	<b>45,479</b>	<b>(973,721)</b>	<b>(1,019,200)</b>	<b>45,479</b>
<b>NET POSITION, BEGINNING OF MONTH / YEAR</b>	<b>66,324,879</b>			<b>66,324,879</b>		
<b>NET POSITION, END OF YEAR</b>	<b>\$ 65,351,158</b>			<b>\$ 65,351,158</b>		

**Stark Area Regional Transit Authority**  
**Canton, Ohio**  
**STATEMENT OF NET POSITION**  
**As of January 31, 2026**

ASSETS:

CURRENT ASSETS:

Cash & cash equivalents	\$ 7,023,762
Receivables:	
Trade	681,761
Sales tax	5,035,299
Other miscellaneous	35,908
Materials & supplies inventory	758,187
Prepaid expenses & other assets	1,345,927
Cash & cash equivalents: Restricted for capital assets	409,816
TOTAL CURRENT ASSETS	<u>15,290,660</u>

NONCURRENT ASSETS:

Other noncurrent assets-net OPEB asset	705,133
Other noncurrent assets-net pension asset	225,265
Right of use asset, net of \$67,112 amortization	2,348,911
TOTAL OTHER NONCURRENT ASSETS	<u>3,279,309</u>

Capital assets:

Land, nondepreciable	2,592,129
Construction & WIP, nondepreciable	3,964,687
Buildings & improvements, depreciable	41,024,443
Transportation equipment, depreciable	62,610,003
Other equipment, depreciable	8,058,668
Total capital assets	118,249,930
Less accumulated depreciation	<u>(52,544,878)</u>
Capital assets-net	<u>65,705,051</u>

TOTAL NONCURRENT ASSETS	<u>68,984,360</u>
-------------------------	-------------------

TOTAL ASSETS	<u>\$ 84,275,020</u>
--------------	----------------------

DEFERRED OUTFLOWS OF RESOURCES:

OPEB	\$ 607,635
Pension	7,057,974
TOTAL DEFERRED OUTFLOWS OF RESOURCES	<u>\$ 7,665,609</u>

**Stark Area Regional Transit Authority**  
**Canton, Ohio**  
**STATEMENT OF NET POSITION**  
**As of January 31, 2026**

LIABILITIES, DEFERRED INFLOWS OF RESOURCES AND NET POSITION

CURRENT LIABILITIES:

Accounts payable	\$	3,611,591
Accrued payroll		237,270
Accrued payroll taxes & withholdings		383,736
Compensated absences		99,242
Other current liabilities		26,839
Capital grants payable		409,816
TOTAL CURRENT LIABILITIES		4,768,493

NONCURRENT LIABILITIES:

Compensated absences		373,895
Net OPEB liability		-
Net pension liability		20,938,306
TOTAL NONCURRENT LIABILITIES		21,312,201

TOTAL LIABILITIES	\$	26,080,694
-------------------	----	------------

DEFERRED INFLOW OF RESOURCES:

OPEB	\$	413,480
Pension		95,298
TOTAL DEFERRED INFLOWS OF RESOURCES	\$	508,778

NET POSITION:

Net investment in capital assets	\$	65,705,051
Restricted for OPEB asset		705,133
Restricted for net pension asset		225,265
Unrestricted		(1,284,292)
TOTAL NET POSITION	\$	65,351,157



## January 2026 Investment Report

Investments			
Name	Yield	Total	Maturity
Star Ohio	3.84%	\$ 1,612,535.65	
CDARS			
-8182	3.60%	\$ 249,755.41	4/2/2026
-9585	3.45%	\$ 255,639.50	2/5/2026
<b>Total of all CDARS</b>		<b>\$ 505,394.91</b>	

5th 3rd								
Type	Current Units	Purchase Date	Identifier	Description	Final Maturity	Original Cost	Market Value	Current Book Yield
CD	249,000.00	4/14/2021	856285VK4	STATE BANK OF INDIA-33682	4/14/2026	\$ 249,000.00	\$ 247,520.94	0.90
CD	245,000.00	5/15/2024	61768E3R2	MORGAN STANLEY PRIVATE BANK	5/15/2026	\$ 245,000.00	\$ 245,798.70	5.00
CD	245,000.00	9/19/2025	319137DM4	FIRST BANK	3/19/2027	245,000.00	\$ 244,813.80	3.70
CD	245,000.00	9/10/2025	549104L88	LUANA SAVINGS BANK	9/10/2027	245,000.00	\$ 244,473.25	3.65
CD	245,000.00	9/15/2025	68405VEL9	OPTUM BANK	9/15/2027	245,000.00	\$ 244,657.00	3.70
CD	250,000.00	9/17/2025	59013LDF8	MERRICK BANK	9/17/2027	250,000.00	\$ 249,652.50	3.70
CD	245,000.00	9/18/2025	89235MTE1	TOYOTA FINANCIAL SAVINGS BANK	9/20/2027	245,000.00	\$ 244,358.10	3.60
CD	170,000.00	9/19/2025	55316CDU7	M1 BANK	10/19/2027	170,000.00	\$ 169,520.60	3.60
CD	245,000.00	9/15/2025	227563NM1	CROSS RIVER BANK	3/15/2028	245,000.00	\$ 244,970.60	3.85
CD	250,000.00	9/15/2025	32022RA72	1ST FINANCIAL BANK USA	9/15/2028	250,000.00	\$ 248,727.50	3.60
MM Fund	525,743.23		60934N104	Federated HRMS	1/31/2026	\$ 525,743.23	\$ 525,743.23	3.54
US GOV	730,000.00	3/31/2025	91282CLG4	United States Treasury	8/15/2027	\$ 728,830.86	\$ 732,394.40	3.82
<b>SUMMARY</b>	<b>3,644,743.23</b>					<b>\$ 3,643,574.09</b>	<b>\$ 3,642,630.62</b>	

**Total of All Investments: \$ 5,760,561.18**



**STARK AREA REGIONAL TRANSIT AUTHORITY**  
**DETAILED INCOME STATEMENT**  
 For the Period Ending 1/31/2026

	<u>January 2026</u> <u>Actual</u>	<u>January 2026</u> <u>Budget</u>	<u>January 2026</u> <u>Prior Yr Actual</u>	<u>Jan 26 - Jan 26</u> <u>Actual</u>	<u>Jan 26 - Jan 26</u> <u>Budget</u>	<u>Jan 25 - Jan 25</u> <u>Prior Yr Actual</u>	<u>-over/under</u> <u>Budget</u>
CASH FARES	34,688	33,511	37,933	34,688	33,511	37,933	-1,177
ADULT PASSES	18,370	42,643	17,910	18,370	42,643	17,910	24,273
FULL FARE TICKETS	20,137	17,424	29,574	20,137	17,424	29,574	-2,712
PURCHASED TRANSPORTATION FARES	0	0	39	0	0	39	0
STUDENT PASSES	275	5,051	330	275	5,051	330	4,776
PROLINE CASH FARES	6,122	9,327	7,144	6,122	9,327	7,144	3,205
REDUCED FARE TICKETS	115	270	78	115	270	78	155
REDUCED FARE PASSES	6,860	7,963	6,804	6,860	7,963	6,804	1,103
PROLINE TICKETS	954	859	1,006	954	859	1,006	-96
PROLINE PASSES	2,025	3,198	3,308	2,025	3,198	3,308	1,173
CLEVELAND TICKETS	174	156	223	174	156	223	-18
<b>TOTAL PASSENGER FARES</b>	<b>89,720</b>	<b>120,402</b>	<b>104,348</b>	<b>89,720</b>	<b>120,402</b>	<b>104,348</b>	<b>30,682</b>
CONTRACTED SERVICES	10,286	7,887	29,107	10,286	7,887	29,107	-2,399
<b>TOTAL SPECIAL TRANSIT</b>	<b>10,286</b>	<b>7,887</b>	<b>29,107</b>	<b>10,286</b>	<b>7,887</b>	<b>29,107</b>	<b>-2,399</b>
PROGRAM INCOME - ADVERTISING	1,334	4,156	2,981	1,334	4,156	2,981	2,822
PROGRAM INCOME - CONCESSIONS	159	100	139	159	100	139	-59
PROGRAM INCOME-RNG SUPPLY	8,355	9,382	0	8,355	9,382	0	1,027
PROGRAM INCOME - BUS WASH	0	100	510	0	100	510	100
<b>SUBTOTAL PROGRAM INCOME</b>	<b>9,847</b>	<b>13,738</b>	<b>3,630</b>	<b>9,847</b>	<b>13,738</b>	<b>3,630</b>	<b>3,891</b>
INTEREST INCOME	20,859	14,583	13,782	20,859	14,583	13,782	-6,276
<b>TOTAL INTEREST &amp; DISCOUNT REVENUE</b>	<b>20,859</b>	<b>14,583</b>	<b>13,782</b>	<b>20,859</b>	<b>14,583</b>	<b>13,782</b>	<b>-6,276</b>
DIESEL FUEL TAX REFUND	0	0	272	0	0	272	0
STARK COUNTY GASOLINE REFUND	302	400	697	302	400	697	99
CNG ROYALTIES	0	200	0	0	200	0	200
CNG - UTILITY REIMBURSEMENT	1,290	1,667	2,917	1,290	1,667	2,917	376
MISC REV-NONTRANSPORTATION	786	6,175	2,140	786	6,175	2,140	5,389
MISC REV-EXTRAORDINARY ITEM	50	150	0	50	150	0	100
INVESTMENT INCOME	-3,187	0	1,604	-3,187	0	1,604	3,187
<b>TOTAL NON-TRANSPORTATION REVENUE</b>	<b>-759</b>	<b>8,592</b>	<b>7,630</b>	<b>-759</b>	<b>8,592</b>	<b>7,630</b>	<b>9,351</b>
SALES TAX REVENUE	1,639,306	1,361,184	1,585,448	1,639,306	1,361,184	1,585,448	-278,122
<b>TOTAL SALES TAX REVENUE</b>	<b>1,639,306</b>	<b>1,361,184</b>	<b>1,585,448</b>	<b>1,639,306</b>	<b>1,361,184</b>	<b>1,585,448</b>	<b>-278,122</b>
<b>TOTAL REVENUES</b>	<b>1,769,259</b>	<b>1,526,385</b>	<b>1,743,945</b>	<b>1,769,259</b>	<b>1,526,385</b>	<b>1,743,945</b>	<b>-242,874</b>



**STARK AREA REGIONAL TRANSIT AUTHORITY**  
**DETAILED INCOME STATEMENT**  
 For the Period Ending 1/31/2026

	<u>January 2026 Actual</u>	<u>January 2026 Budget</u>	<u>January 2026 Prior Yr Actual</u>	<u>Jan 26 - Jan 26 Actual</u>	<u>Jan 26 - Jan 26 Budget</u>	<u>Jan 25 - Jan 25 Prior Yr Actual</u>	<u>-over/under Budget</u>
<b>EXPENSES</b>							
<b>EXECUTIVE OFFICE</b>							
EX - SAL & WAGES-FIXED	18,446	11,445	15,088	18,446	11,445	15,088	-7,001
EX - SAL & WAGES-PARATRANSIT	9,169	5,636	7,773	9,169	5,636	7,773	-3,533
EX - INCENTIVES	0	83	0	0	83	0	83
EX - MEDICARE TAX	523	325	507	523	325	507	-198
EX - PERS	5,600	5,077	6,193	5,600	5,077	6,193	-522
EX - HEALTH INSURANCE	1,227	3,533	4,810	1,227	3,533	4,810	2,306
EX - LIFE INSURANCE	5	16	16	5	16	16	11
EX - VISION	9	55	27	9	55	27	46
EX - DENTAL	4	13	24	4	13	24	9
EX - WORKERS' COMP	96	449	343	96	449	343	353
EX - SICK LEAVE	231	1,119	326	231	1,119	326	888
EX - HOLIDAY,FUNERAL,OTHER	231	689	1,122	231	689	1,122	458
EX - PTO	231	3,500	1,495	231	3,500	1,495	3,269
EX - UNIFORMS	-187	0	0	-187	0	0	187
<b>TOTAL EXECUTIVE OFFICES WAGES &amp; BENEFITS</b>	<b>35,584</b>	<b>31,940</b>	<b>37,725</b>	<b>35,584</b>	<b>31,940</b>	<b>37,725</b>	<b>-3,644</b>
EX - PTS LEGAL-GENERAL	3,949	18,750	25,500	3,949	18,750	25,500	14,801
EX - PTS-OTHER	15,000	4,167	12,189	15,000	4,167	12,189	-10,833
EX - CLINIC	7,200	8,333	9,762	7,200	8,333	9,762	1,133
EX - CLINIC SUPPLIES	3,879	3,917	0	3,879	3,917	0	38
EX - TRAINING & TRAVEL EXPENSE	0	417	0	0	417	0	417
<b>TOTAL EXECUTIVE OFFICE</b>	<b>65,612</b>	<b>67,524</b>	<b>85,175</b>	<b>65,612</b>	<b>67,524</b>	<b>85,175</b>	<b>1,912</b>
<b>TRANSPORTATION</b>							
TR - SAL & WAGES-FIXED	392,045	381,680	342,466	392,045	381,680	342,466	-10,366
TR - SAL & WAGES-PARATRANSIT	101,192	188,553	176,695	101,192	188,553	176,695	87,361
TR - INCENTIVE	500	5,417	99,175	500	5,417	99,175	4,917
TR - MEDICARE TAX	11,288	9,233	13,163	11,288	9,233	13,163	-2,055
TR - PERS	132,705	143,528	137,767	132,705	143,528	137,767	10,822
TR - HEALTH INSURANCE	145,968	229,647	302,461	145,968	229,647	302,461	83,679
TR - LIFE INSURANCE	829	1,014	1,065	829	1,014	1,065	185
TR - DENTAL	13,022	836	15,377	13,022	836	15,377	-12,185
TR - UNEMPLOYMENT	6,692	0	10,594	6,692	0	10,594	-6,692
TR - WORKERS' COMP	11,042	13,474	22,662	11,042	13,474	22,662	2,433
TR - HOLIDAY,FUNERAL,OTHER	23,446	15,695	24,648	23,446	15,695	24,648	-7,750
TR - PTO	101,328	50,834	72,880	101,328	50,834	72,880	-50,494
TR - SHORT TERM DISABILITY AND OTHER WAGES	6,538	7,205	9,491	6,538	7,205	9,491	667
TR - UNIFORMS	0	2,167	6,196	0	2,167	6,196	2,167
TR - YMCA & MISC BENEFITS	0	0	1,180	0	0	1,180	0
TA - SAL & WAGES-FIXED	53,920	50,838	59,293	53,920	50,838	59,293	-3,082
TA - SAL & WAGES-PARATRANSIT	27,021	25,039	30,545	27,021	25,039	30,545	-1,981
TA - INCENTIVE	25	667	0	25	667	0	642
TA - MEDICARE TAX	1,809	1,335	1,998	1,809	1,335	1,998	-474

Date Printed 2/16/2026

Time Printed 2:44 PM



**STARK AREA REGIONAL TRANSIT AUTHORITY**  
**DETAILED INCOME STATEMENT**  
 For the Period Ending 1/31/2026

	<u>January 2026</u> <u>Actual</u>	<u>January 2026</u> <u>Budget</u>	<u>January 2026</u> <u>Prior Yr Actual</u>	<u>Jan 26 - Jan 26</u> <u>Actual</u>	<u>Jan 26 - Jan 26</u> <u>Budget</u>	<u>Jan 25 - Jan 25</u> <u>Prior Yr Actual</u>	<u>-over/under</u> <u>Budget</u>
TA - PERS	23,067	21,067	23,870	23,067	21,067	23,870	-2,000
TA - HEALTH INSURANCE	21,308	28,264	40,868	21,308	28,264	40,868	6,956
TA - LIFE INSURANCE	73	119	137	73	119	137	46
TA - VISION	143	338	233	143	338	233	195
TA - DENTAL	63	103	201	63	103	201	40
TA - WORKERS' COMP	1,536	1,854	2,919	1,536	1,854	2,919	318
TA - SICK LEAVE	3,523	4,279	2,358	3,523	4,279	2,358	755
TA - HOLIDAY,FUNERAL,OTHER	4,545	2,633	4,720	4,545	2,633	4,720	-1,912
TA - PTO	7,110	9,270	2,541	7,110	9,270	2,541	2,160
TA - UNIFORMS	720	0	-96	720	0	-96	-720
TA - YMCA & MISC BENEFITS	0	0	249	0	0	249	0
TA - TRAINING & TRAVEL	1,362	0	0	1,362	0	0	-1,362
<b>TOTAL TRANSPORTATION WAGES &amp; BENEFITS</b>	<b>1,092,819</b>	<b>1,195,090</b>	<b>1,405,657</b>	<b>1,092,819</b>	<b>1,195,090</b>	<b>1,405,657</b>	<b>102,270</b>
TR - PTS-OTHER	2,908	3,000	2,825	2,908	3,000	2,825	92
TR - PRINTING	0	2,833	0	0	2,833	0	2,833
TR - DUES & SUBSCRIPTIONS	279	167	0	279	167	0	-113
TR - EXPENDABLE ASSETS	0	167	0	0	167	0	167
<b>TOTAL TRANSPORTATION</b>	<b>1,096,007</b>	<b>1,201,256</b>	<b>1,408,482</b>	<b>1,096,007</b>	<b>1,201,256</b>	<b>1,408,482</b>	<b>105,249</b>
<b>MAINTENANCE</b>							
MA - SAL & WAGES-FIXED	27,154	22,034	29,757	27,154	22,034	29,757	-5,120
MA - SAL & WAGES-PARATRANSIT	13,746	10,852	15,329	13,746	10,852	15,329	-2,894
MA - INCENTIVE	150	292	0	150	292	0	142
MA - MEDICARE TAX	950	604	1,170	950	604	1,170	-346
MA - PERS	11,847	9,502	12,878	11,847	9,502	12,878	-2,345
MA - HEALTH INSURANCE	9,269	12,366	14,315	9,269	12,366	14,315	3,097
MA - LIFE INSURANCE	32	54	48	32	54	48	22
MA - VISION	63	175	82	63	175	82	112
MA - DENTAL	28	45	71	28	45	71	17
MA - WORKERS' COMP	672	836	1,030	672	836	1,030	164
MA - SICK LEAVE	843	2,084	6,335	843	2,084	6,335	1,241
MA - HOLIDAY,FUNERAL,OTHER	2,149	1,282	2,489	2,149	1,282	2,489	-867
MA - PTO	5,548	5,425	9,472	5,548	5,425	9,472	-122
MA - SHORT TERM DISABILITY AND OTHER WAGES	0	449	0	0	449	0	449
MA - TRAINING & TRAVEL EXPENSE	1,362	0	0	1,362	0	0	-1,362
MS - SAL & WAGES-FIXED	21,629	20,181	19,171	21,629	20,181	19,171	-1,448
MS - SAL & WAGES-PARATRANSIT	10,719	9,940	9,876	10,719	9,940	9,876	-779
MS - INCENTIVE	0	292	6,400	0	292	6,400	292
MS - MEDICARE TAX	711	496	751	711	496	751	-215
MS - PERS	7,926	7,693	8,288	7,926	7,693	8,288	-234
MS - HEALTH INSURANCE	9,757	12,366	18,317	9,757	12,366	18,317	2,609
MS - LIFE INSURANCE	37	53	65	37	53	65	16
MS - DENTAL	888	45	945	888	45	945	-843
MS - WORKERS' COMP	768	722	1,373	768	722	1,373	-46
MS - HOLIDAY,FUNERAL,OTHER	1,030	841	1,346	1,030	841	1,346	-189

Date Printed 2/16/2026

Time Printed 2:44 PM



**STARK AREA REGIONAL TRANSIT AUTHORITY**  
**DETAILED INCOME STATEMENT**  
 For the Period Ending 1/31/2026

	<u>January 2026</u> <u>Actual</u>	<u>January 2026</u> <u>Budget</u>	<u>January 2026</u> <u>Prior Yr Actual</u>	<u>Jan 26 - Jan 26</u> <u>Actual</u>	<u>Jan 26 - Jan 26</u> <u>Budget</u>	<u>Jan 25 - Jan 25</u> <u>Prior Yr Actual</u>	<u>-over/under</u> <u>Budget</u>
MS - PTO	5,150	3,228	4,327	5,150	3,228	4,327	-1,922
MS - SHORT TERM DISABILITY AND OTHER WAGES	-660	1,013	2,019	-660	1,013	2,019	1,673
MS - UNIFORMS	381	117	250	381	117	250	-264
MS - YMCA & MISC BENEFITS	0	0	211	0	0	211	0
MT - SAL & WAGES-FIXED	49,351	57,110	46,255	49,351	57,110	46,255	7,760
MT - SAL & WAGES-PARATRANSIT	24,713	28,129	23,829	24,713	28,129	23,829	3,416
MT - INCENTIVE	0	667	12,750	0	667	12,750	667
MT - MEDICARE TAX	1,702	1,385	1,769	1,702	1,385	1,769	-317
MT - PERS	19,435	21,495	19,111	19,435	21,495	19,111	2,060
MT - HEALTH INSURANCE	17,361	28,264	36,980	17,361	28,264	36,980	10,904
MT - LIFE INSURANCE	64	118	129	64	118	129	54
MT - DENTAL	1,614	103	1,996	1,614	103	1,996	-1,511
MT - WORKERS' COMP	1,344	2,018	2,747	1,344	2,018	2,747	674
MT - HOLIDAY	3,329	2,351	3,325	3,329	2,351	3,325	-978
MT - PTO	10,007	7,943	5,841	10,007	7,943	5,841	-2,063
MT - SHORT TERM DISABILITY AND OTHER WAGES	3,106	1,270	5,250	3,106	1,270	5,250	-1,837
MT - UNIFORMS	560	267	682	560	267	682	-293
MT - TOOLS	2,293	1,533	2,052	2,293	1,533	2,052	-760
MBGE - SAL & WAGES-FIXED	10,627	9,918	11,048	10,627	9,918	11,048	-708
MBGE - SAL & WAGES-PARATRANSIT	5,324	4,885	5,691	5,324	4,885	5,691	-439
MBGE - INCENTIVE	200	167	0	200	167	0	-33
MBGE - MEDICARE TAX	361	261	458	361	261	458	-99
MBGE - PERS	4,742	4,111	6,200	4,742	4,111	6,200	-631
MBGE - HEALTH INSURANCE	5,318	7,066	12,025	5,318	7,066	12,025	1,748
MBGE - LIFE INSURANCE	18	30	40	18	30	40	12
MBGE - VISION	36	76	69	36	76	69	40
MBGE - DENTAL	16	26	59	16	26	59	10
MBGE - WORKERS' COMP	384	362	858	384	362	858	-22
MBGE - SICK LEAVE	414	902	855	414	902	855	488
MBGE - HOLIDAY,FUNERAL,OTHER	1,441	555	1,199	1,441	555	1,199	-886
MBGE - PTO	1,960	1,771	4,206	1,960	1,771	4,206	-189
MBGE - SHORT TERM DISABILITY AND OTHER WAGES	0	833	2,243	0	833	2,243	833
MBGE - UNIFORMS	103	67	140	103	67	140	-36
MBGE - YMCA & MISC BENEFITS	0	0	47	0	0	47	0
<b>TOTAL MAINTENANCE WAGES &amp; BENEFITS</b>	<b>297,969</b>	<b>306,670</b>	<b>374,172</b>	<b>297,969</b>	<b>306,670</b>	<b>374,172</b>	<b>8,700</b>
M - TEMPORARY HELP	0	1,667	0	0	1,667	0	1,667
M - CMS REV VEH-FIXED	4,013	7,000	13,388	4,013	7,000	13,388	2,988
M - CMS REV VEH-PARATRANSIT	2,374	2,583	688	2,374	2,583	688	209
M - CMS-NON REV VEHICLES	0	583	0	0	583	0	583
M - CMS-FAREBOX PARTS-FIXED	0	167	0	0	167	0	167
M - CMS-BLDG GRND. & EQUIPMENT	7,466	14,667	7,942	7,466	14,667	7,942	7,201
M - CMS-RADIO EQUIP-FIXED	0	333	645	0	333	645	333
M - CMS-RADIO EQUIP-PARATRANSIT	0	833	0	0	833	0	833
M - CMS-SECURITY SYSTEM	0	83	0	0	83	0	83
M - CMS - CNG FUELING STATION	26,158	25,083	26,377	26,158	25,083	26,377	-1,074

Date Printed 2/16/2026

Time Printed 2:44 PM



**STARK AREA REGIONAL TRANSIT AUTHORITY**  
**DETAILED INCOME STATEMENT**  
 For the Period Ending 1/31/2026

	<u>January 2026</u> <u>Actual</u>	<u>January 2026</u> <u>Budget</u>	<u>January 2026</u> <u>Prior Yr Actual</u>	<u>Jan 26 - Jan 26</u> <u>Actual</u>	<u>Jan 26 - Jan 26</u> <u>Budget</u>	<u>Jan 25 - Jan 25</u> <u>Prior Yr Actual</u>	<u>-over/under</u> <u>Budget</u>
M - CMS - HYDROGEN FUELING STATION	990	16,250	12,638	990	16,250	12,638	15,260
M - DIESEL FUEL-FIXED	109	83	1,425	109	83	1,425	-26
M - DIESEL FUEL-PARATRANSIT	0	0	2,536	0	0	2,536	0
M - LUBRICANTS-FIXED	1,531	3,083	3,099	1,531	3,083	3,099	1,552
M - LUBRICANTS-PARATRANSIT	186	1,750	5,314	186	1,750	5,314	1,564
M - FUEL TAX EXP-FIXED	15	0	47	15	0	47	-15
M - FUEL TAX EXP-PARATRANSIT	0	0	121	0	0	121	0
M - CNG FUEL-FIXED	29,264	21,708	24,722	29,264	21,708	24,722	-7,555
M - CNG FUEL-PARATRANSIT	12,026	10,167	11,537	12,026	10,167	11,537	-1,860
M - CNG FUEL PUBLIC	843	667	1,514	843	667	1,514	-176
M - HYDROGEN-FIXED	31,476	50,208	32,497	31,476	50,208	32,497	18,733
M - WAYNE COUNTY FUEL	0	0	503	0	0	503	0
M - PARA GAS	2,356	9,500	5,465	2,356	9,500	5,465	7,144
M - FUEL & LUBE-COMPANY VEHICLES	3,282	4,750	4,166	3,282	4,750	4,166	1,468
M - TIRES & TUBES-FIXED	12,608	13,667	14,407	12,608	13,667	14,407	1,058
M - TIRES & TUBES-PARATRANSIT	1,465	2,000	844	1,465	2,000	844	535
M - TIRES SUPPORT VEHICLES	0	417	0	0	417	0	417
M - OMS-SUPPLIES	11,147	7,250	7,307	11,147	7,250	7,307	-3,897
M - FREIGHT	780	833	449	780	833	449	54
M - INSP & REPAIR-FIXED	104,111	61,583	75,821	104,111	61,583	75,821	-42,528
M - INSP & REPAIR-PARATRANSIT	36,292	24,917	24,647	36,292	24,917	24,647	-11,376
M - INSP & REPAIR-CO. VEHICLES	557	3,083	1,097	557	3,083	1,097	2,526
M - OMS-MAINT EQUIPMENT	1,516	5,833	1,768	1,516	5,833	1,768	4,317
M - OMS FIXED ROUTE	7,711	29,417	2,086	7,711	29,417	2,086	21,706
M - OMS PARATRANSIT	301	1,000	314	301	1,000	314	699
M - CORE CHARGES/CREDITS	2,442	3,167	1,387	2,442	3,167	1,387	724
M - OMS-COMPANY VEHICLES	500	833	1,100	500	833	1,100	333
M - FAREBOX PARTS-FIXED	62	1,000	-1,684	62	1,000	-1,684	938
M - FAREBOX PARTS-PARATRANSIT	310	1,167	181	310	1,167	181	856
M - COMMUNICATIONS MODEMS AVAIL	6,751	3,750	5,554	6,751	3,750	5,554	-3,001
M - BLDG & GROUNDS OMS	542	6,333	10,812	542	6,333	10,812	5,791
M - OMS INSURANCE REC-OTRP	0	-750	-3,552	0	-750	-3,552	-750
M - EXPENDABLE ASSETS	438	0	0	438	0	0	-438
<b>TOTAL MAINTENANCE</b>	<b>607,593</b>	<b>643,336</b>	<b>671,334</b>	<b>607,593</b>	<b>643,336</b>	<b>671,334</b>	<b>35,744</b>
<b>FINANCE</b>							
FIN - SAL & WAGES-FIXED	18,561	17,843	26,022	18,561	17,843	26,022	-717
FIN - SAL & WAGES-PARATRANSIT	9,194	8,788	13,405	9,194	8,788	13,405	-405
FIN - MEDICARE TAX	750	471	821	750	471	821	-279
FIN - INCENTIVE	5,000	208	0	5,000	208	0	-4,792
FIN - PERS	8,108	7,408	10,644	8,108	7,408	10,644	-699
FIN - HEALTH INSURANCE	6,590	8,833	16,835	6,590	8,833	16,835	2,242
FIN - LIFE INSURANCE	23	39	56	23	39	56	16
FIN - VISION	45	137	96	45	137	96	92
FIN - DENTAL	20	32	83	20	32	83	12

Date Printed 2/16/2026

Time Printed 2:44 PM



**STARK AREA REGIONAL TRANSIT AUTHORITY**  
**DETAILED INCOME STATEMENT**  
 For the Period Ending 1/31/2026

	<u>January 2026</u> Actual	<u>January 2026</u> Budget	<u>January 2026</u> Prior Yr Actual	<u>Jan 26 - Jan 26</u> Actual	<u>Jan 26 - Jan 26</u> Budget	<u>Jan 25 - Jan 25</u> Prior Yr Actual	<u>-over/under</u> Budget
FIN - WORKERS' COMP	480	652	1,202	480	652	1,202	172
FIN - SICK LEAVE	633	1,625	724	633	1,625	724	992
FIN - HOLIDAY,FUNERAL,OTHER	1,533	1,000	2,185	1,533	1,000	2,185	-533
FIN - PTO	3,953	3,237	2,015	3,953	3,237	2,015	-716
FIN - YMCA & MISC BENEFITS	0	0	211	0	0	211	0
<b>TOTAL FINANCE WAGES &amp; BENEFITS</b>	<b>54,889</b>	<b>50,274</b>	<b>74,299</b>	<b>54,889</b>	<b>50,274</b>	<b>74,299</b>	<b>-4,615</b>
FIN - SOFTWARE SERVICE	1,402	1,667	1,078	1,402	1,667	1,078	265
FIN - PTS OTHER	431	4,167	30,851	431	4,167	30,851	3,736
FIN - DUES & SUBSCRIPTIONS	0	667	0	0	667	0	667
FIN - LEGAL ADS	0	250	0	0	250	0	250
FIN - TRAINING & TRAVEL EXPENSE	0	333	0	0	333	0	333
<b>TOTAL FINANCE</b>	<b>56,721</b>	<b>57,357</b>	<b>106,228</b>	<b>56,721</b>	<b>57,357</b>	<b>106,228</b>	<b>636</b>
<b>INFORMATION TECHNOLOGY</b>							
IT - SAL & WAGES-FIXED	12,468	11,514	12,586	12,468	11,514	12,586	-954
IT - SAL & WAGES-PARATRANSIT	6,495	5,671	6,484	6,495	5,671	6,484	-824
IT - MEDICARE TAX	415	317	419	415	317	419	-97
IT - INCENTIVE	0	125	0	0	125	0	125
IT - PERS	5,215	4,992	5,415	5,215	4,992	5,415	-223
IT - HEALTH INSURANCE	3,994	5,300	7,215	3,994	5,300	7,215	1,306
IT - LIFE INSURANCE	14	23	24	14	23	24	10
IT - VISION	27	82	41	27	82	41	55
IT - DENTAL	12	19	36	12	19	36	7
IT - WORKERS' COMP	288	439	515	288	439	515	151
IT - SICK LEAVE	868	1,095	1,557	868	1,095	1,557	227
IT - HOLIDAY,FUNERAL,OTHER	981	674	981	981	674	981	-307
IT - PTO	916	2,939	955	916	2,939	955	2,023
IT - YMCA & MISC BENEFITS	0	0	211	0	0	211	0
<b>TOTAL INFORMATION TECHNOLOGY WAGES &amp; BENEFI...</b>	<b>31,693</b>	<b>33,192</b>	<b>36,439</b>	<b>31,693</b>	<b>33,192</b>	<b>36,439</b>	<b>1,499</b>
IT - HARDWARE SERVICE CONTRACTS	12,109	12,000	12,319	12,109	12,000	12,319	-109
IT - SOFTWARE SERVICE CONTRACTS	19,644	23,000	29,457	19,644	23,000	29,457	3,356
IT - PTS-OTHER	0	42	0	0	42	0	42
IT - EXPENDABLE ASSETS & SOFTWARE	0	1,250	0	0	1,250	0	1,250
IT - DUES & SUBSCRIPTIONS	2,209	2,500	2,209	2,209	2,500	2,209	291
IT - TRAINING EXPENSE	2,724	417	0	2,724	417	0	-2,307
<b>TOTAL INFORMATION TECHNOLOGY</b>	<b>68,379</b>	<b>72,400</b>	<b>80,423</b>	<b>68,379</b>	<b>72,400</b>	<b>80,423</b>	<b>4,021</b>
<b>PLANNING</b>							
PL - SAL & WAGES-FIXED	14,735	14,097	0	14,735	14,097	0	-638
PL - SAL & WAGES-PARATRANSIT	7,427	6,943	0	7,427	6,943	0	-484
PL - MEDICARE TAX	501	381	0	501	381	0	-121
PL - INCENTIVE	1,400	167	0	1,400	167	0	-1,233
PL - PERS	6,311	5,988	0	6,311	5,988	0	-323
PL - HEALTH INSURANCE	5,356	7,066	0	5,356	7,066	0	1,710

Date Printed 2/16/2026

Time Printed 2:44 PM



**STARK AREA REGIONAL TRANSIT AUTHORITY**  
**DETAILED INCOME STATEMENT**  
 For the Period Ending 1/31/2026

	<u>January 2026 Actual</u>	<u>January 2026 Budget</u>	<u>January 2026 Prior Yr Actual</u>	<u>Jan 26 - Jan 26 Actual</u>	<u>Jan 26 - Jan 26 Budget</u>	<u>Jan 25 - Jan 25 Prior Yr Actual</u>	<u>-over/under Budget</u>
PL - LIFE INSURANCE	18	30	0	18	30	0	11
PL - VISION	36	59	0	36	59	0	24
PL - DENTAL	16	26	0	16	26	0	10
PL - WORKERS' COMP	384	527	0	384	527	0	143
PL - SICK LEAVE	56	1,313	0	56	1,313	0	1,257
PL - HOLIDAY,FUNERAL,OTHER	1,443	808	0	1,443	808	0	-635
PL - PTO	2,573	3,101	0	2,573	3,101	0	528
<b>TOTAL PLANNING WAGES &amp; BENEFITS</b>	<b>40,257</b>	<b>40,506</b>	<b>0</b>	<b>40,257</b>	<b>40,506</b>	<b>0</b>	<b>249</b>
PL - PTS OTHER	0	6,500	0	0	6,500	0	6,500
PL - DUES & SUBSCRIPTIONS	492	0	0	492	0	0	-492
PL - TRAINING & TRAVEL EXPENSE	1,566	417	0	1,566	417	0	-1,150
<b>TOTAL PLANNING</b>	<b>42,315</b>	<b>47,423</b>	<b>0</b>	<b>42,315</b>	<b>47,423</b>	<b>0</b>	<b>5,108</b>
<b>BOARD</b>							
<b>CUSTOMER RELATIONS</b>							
CR - SAL & WAGES-FIXED	31,815	31,775	40,491	31,815	31,775	40,491	-39
CR - SAL & WAGES-PARATRANSIT	15,967	15,651	20,859	15,967	15,651	20,859	-316
CR - MEDICARE TAX	1,041	837	1,869	1,041	837	1,869	-204
CR - INCENTIVE	0	500	0	0	500	0	500
CR - PERS	13,267	13,214	16,881	13,267	13,214	16,881	-53
CR - HEALTH INSURANCE	15,545	21,198	26,167	15,545	21,198	26,167	5,654
CR - LIFE INSURANCE	50	91	89	50	91	89	41
CR - VISION	99	262	151	99	262	151	163
CR - DENTAL	43	77	130	43	77	130	34
CR - WORKERS' COMP	1,056	1,161	1,889	1,056	1,161	1,889	104
CR - SICK LEAVE	1,459	2,757	17,055	1,459	2,757	17,055	1,298
CR - HOLIDAY	2,459	1,697	3,098	2,459	1,697	3,098	-762
CR - PTO	3,602	5,822	20,559	3,602	5,822	20,559	2,220
CR - SHORT TERM DISABILITY AND OTHER WAGES	0	0	692	0	0	692	0
CR - YMCA & MISC BENEFITS	0	0	246	0	0	246	0
<b>TOTAL CUSTOMER RELATIONS WAGES &amp; BENEFITS</b>	<b>86,403</b>	<b>95,041</b>	<b>150,175</b>	<b>86,403</b>	<b>95,041</b>	<b>150,175</b>	<b>8,639</b>
CR - PTS OTHER	-5,719	16,667	21,954	-5,719	16,667	21,954	22,386
CR - PRINTING	72	1,667	118	72	1,667	118	1,594
CR - DUES & SUBSCRIPTIONS	2,251	833	2,528	2,251	833	2,528	-1,418
CR - TRAINING & TRAVEL EXPENSE	1,362	833	0	1,362	833	0	-529
CR - ADVERTISING	383	20,000	2,547	383	20,000	2,547	19,617
CR - PROGRAM OUTREACH	1,000	3,333	0	1,000	3,333	0	2,333
CR - EVENTS	150	417	0	150	417	0	267
CR - PROMOTIONAL MATERIALS	0	2,500	0	0	2,500	0	2,500
CR - LEGAL ADS	0	167	0	0	167	0	167
CR - EXPENDABLE ASSETS	0	42	890	0	42	890	42
<b>TOTAL CUSTOMER RELATIONS</b>	<b>85,903</b>	<b>141,500</b>	<b>178,213</b>	<b>85,903</b>	<b>141,500</b>	<b>178,213</b>	<b>55,597</b>

**HUMAN RESOURCE**

Date Printed 2/16/2026

Time Printed 2:44 PM



**STARK AREA REGIONAL TRANSIT AUTHORITY**  
**DETAILED INCOME STATEMENT**  
 For the Period Ending 1/31/2026

	<u>January 2026</u> Actual	<u>January 2026</u> Budget	<u>January 2026</u> Prior Yr Actual	<u>Jan 26 - Jan 26</u> Actual	<u>Jan 26 - Jan 26</u> Budget	<u>Jan 25 - Jan 25</u> Prior Yr Actual	<u>-over/under</u> Budget
HR - SAL & WAGES-FIXED	12,075	19,684	20,029	12,075	19,684	20,029	7,609
HR - SAL & WAGES-PARATRANSIT	5,934	9,695	10,318	5,934	9,695	10,318	3,761
HR - MEDICARE TAX	491	512	717	491	512	717	21
HR - PERS	5,365	8,046	9,080	5,365	8,046	9,080	2,681
HR - INCENTIVE	0	250	0	0	250	0	250
HR - HEALTH INSURANCE	6,695	10,599	14,430	6,695	10,599	14,430	3,904
HR - LIFE INSURANCE	23	47	48	23	47	48	24
HR - VISION	45	164	82	45	164	82	120
HR - DENTAL	20	39	71	20	39	71	19
HR - WORKERS' COMP	480	708	1,030	480	708	1,030	228
HR - SICK LEAVE	-277	1,764	1,473	-277	1,764	1,473	2,041
HR - HOLIDAY,FUNERAL,OTHER	946	1,086	1,645	946	1,086	1,645	139
HR - PTO	1,598	3,059	4,366	1,598	3,059	4,366	1,461
HR - SHORT TERM DISABILITY AND OTHER WAGES	1,607	117	0	1,607	117	0	-1,490
HR - TUITION REIMBURSEMENT	0	833	0	0	833	0	833
<b>TOTAL HUMAN RESOURCES WAGES &amp; BENEFITS</b>	<b>35,003</b>	<b>56,603</b>	<b>63,291</b>	<b>35,003</b>	<b>56,603</b>	<b>63,291</b>	<b>21,600</b>
HR - PTS-OTHER	2,768	6,250	6,229	2,768	6,250	6,229	3,483
HR - LEGAL ADS	0	42	0	0	42	0	42
HR - EMPLOYEE RELATIONS	726	1,667	304	726	1,667	304	941
HR - WELLNESS PROGRAM	0	1,250	0	0	1,250	0	1,250
HR - TRAINING & TRAVEL EXPENSE	0	417	0	0	417	0	417
HR - AGENCY TRAINING	0	1,083	160	0	1,083	160	1,083
HR - EXPENDABLE ASSETS	0	83	0	0	83	0	83
<b>TOTAL HUMAN RESOURCE</b>	<b>38,497</b>	<b>67,395</b>	<b>69,983</b>	<b>38,497</b>	<b>67,395</b>	<b>69,983</b>	<b>28,898</b>
<b>GENERAL</b>							
GEN - LEGAL ADS	0	208	0	0	208	0	208
GEN - PTS-OTHER	400	2,083	7,839	400	2,083	7,839	1,683
GEN - SECURITY SERVICES	18,174	35,417	29,867	18,174	35,417	29,867	17,243
GEN - OFFICE EXPENSES	4,114	2,500	2,594	4,114	2,500	2,594	-1,614
GEN - EXPENDABLE ASSETS	0	208	0	0	208	0	208
GEN - UTILITIES-ELECTRIC	30,355	31,083	29,188	30,355	31,083	29,188	728
GEN - UTILITIES-ELECTRIC - CNG	14,677	15,333	15,526	14,677	15,333	15,526	656
GEN - UTILITIES-OTHER	6,445	3,583	3,522	6,445	3,583	3,522	-2,862
GEN - UTILITIES-TELEPHONE	6,594	9,917	7,403	6,594	9,917	7,403	3,323
GEN - UTILITIES-TELEPHONE - CNG	0	417	414	0	417	414	417
GEN - UTILITIES-NATURAL GAS	21,000	14,917	18,739	21,000	14,917	18,739	-6,083
GEN - PREM FOR PUBLIC LIAB & PROPERTY INSURANCE	67,480	66,667	63,612	67,480	66,667	63,612	-813
GEN - DEDUCTIBLES	0	6,667	0	0	6,667	0	6,667
GEN - PROPERTY TAXES	0	50	1,506	0	50	1,506	50
GEN - DUES & SUBSCRIPTIONS	23,589	23,333	22,367	23,589	23,333	22,367	-255
GEN - SAFETY	923	1,583	1,225	923	1,583	1,225	660
GEN - FEES	5,107	5,000	2,472	5,107	5,000	2,472	-107
GEN - FEES CREDIT CARD	2,839	3,167	1,964	2,839	3,167	1,964	328
GEN - SALES TAX COLLECTION EXPENSE	16,393	15,833	15,854	16,393	15,833	15,854	-560

Date Printed 2/16/2026

Time Printed 2:44 PM



**STARK AREA REGIONAL TRANSIT AUTHORITY**  
**DETAILED INCOME STATEMENT**  
 For the Period Ending 1/31/2026

	<u>January 2026 Actual</u>	<u>January 2026 Budget</u>	<u>January 2026 Prior Yr Actual</u>	<u>Jan 26 - Jan 26 Actual</u>	<u>Jan 26 - Jan 26 Budget</u>	<u>Jan 25 - Jan 25 Prior Yr Actual</u>	<u>-over/under Budget</u>
GEN - POSTAGE	717	542	1,384	717	542	1,384	-175
GEN - CTE RFHCC	0	0	3,464	0	0	3,464	0
SUBGRANTEE - 5310 ENHANCED MOBILITY	71,239	42,545	0	71,239	42,545	0	-28,694
SUBGRANTEE - RESEARCH	307,403	146,138	5,105	307,403	146,138	5,105	-161,265
<b>TOTAL GENERAL EXPENSES</b>	<b>597,448</b>	<b>427,191</b>	<b>234,046</b>	<b>597,448</b>	<b>427,191</b>	<b>234,046</b>	<b>-170,257</b>
<b>TOTAL EXPENSES</b>	<b>2,658,474</b>	<b>2,725,382</b>	<b>2,833,884</b>	<b>2,658,474</b>	<b>2,725,382</b>	<b>2,833,884</b>	<b>66,908</b>
<b>OPERATING INCOME (LOSS) EXCLUDING PREVENTIVE MAINTENANCE GRANTS</b>	<b>-889,215</b>	<b>-1,198,997</b>	<b>-1,089,939</b>	<b>-889,215</b>	<b>-1,198,997</b>	<b>-1,089,939</b>	<b>-309,782</b>
<b>RESTRICTED REVENUE FROM CAPITAL GRANTS</b>							
<b>TOTAL LOCAL CASH GRANTS</b>							
SCG - OPERATING	0	125,000	0	0	125,000	0	125,000
SCG - PREVENTIVE MAINTENANCE	0	75,295	0	0	75,295	0	75,295
STATE CAPITAL GRANTS	23,952	31,099	0	23,952	31,099	0	7,147
<b>TOTAL STATE GRANTS</b>	<b>23,952</b>	<b>231,394</b>	<b>0</b>	<b>23,952</b>	<b>231,394</b>	<b>0</b>	<b>207,442</b>
FG - 5310 ENHANCED MOBILITY	130,435	44,440	0	130,435	44,440	0	-85,995
FG - PLANNING	106	6,871	0	106	6,871	0	6,765
FCG - PREVENTIVE MAINTENANCE	0	446,055	360,432	0	446,055	360,432	446,055
FEDERAL GRANTS	0	313,010	300,815	0	313,010	300,815	313,010
FEDERAL GRANTS-OTHER	359,411	150,671	5,242	359,411	150,671	5,242	-208,740
FEDERAL CAPITAL GRANTS	108,306	452,021	21,295	108,306	452,021	21,295	343,715
<b>TOTAL FEDERAL GRANTS</b>	<b>598,258</b>	<b>1,413,069</b>	<b>687,784</b>	<b>598,258</b>	<b>1,413,069</b>	<b>687,784</b>	<b>814,811</b>
<b>TOTAL GRANTS</b>	<b>622,210</b>	<b>1,644,462</b>	<b>687,784</b>	<b>622,210</b>	<b>1,644,462</b>	<b>687,784</b>	<b>1,022,252</b>
<b>DEPRECIATION &amp; AMORTIZATION</b>							
DEPRECIATION EXP-GRANTS	550,526	550,000	528,583	550,526	550,000	528,583	-526
DEPRECIATION EXP-LOCAL MATCH	82,688	83,333	79,889	82,688	83,333	79,889	645
GENERAL AMORTIZATION	73,502	7,500	8,573	73,502	7,500	8,573	-66,002
<b>TOTAL DEPRECIATION &amp; AMORTIZATION</b>	<b>706,716</b>	<b>640,833</b>	<b>617,045</b>	<b>706,716</b>	<b>640,833</b>	<b>617,045</b>	<b>-65,883</b>
<b>NET INCOME AFTER DEPRECIATION,AMORTIZATION...</b>	<b>-973,721</b>	<b>-195,368</b>	<b>-1,019,200</b>	<b>-973,721</b>	<b>-195,368</b>	<b>-1,019,200</b>	<b>778,353</b>



JANUARY CHECKS-BY VENDOR

Document Date	Document Number	Vendor Name	Vendor ID	Document Amount	Voided
1/21/2026	096665	"DSI MEDICAL SERVICES	DSIM001	3,246.00000	No
1/21/2026	096655	ALLIANCE WATER UTILITY	ALLI004	218.07000	No
1/21/2026	096656	AMAZON	AMAZ001	799.50000	No
1/21/2026	096658	CANTON CITY UTILITIES	CANT011	1,840.45000	No
1/21/2026	096659	CANTON MUNICIPAL COURT	CANT020	973.62000	No
1/21/2026	096660	CFIS GROUP	CFIS001	650.02000	No
1/21/2026	096661	CHAPTER 13 TRUSTEE	CHAP001	1,061.54000	No
1/21/2026	096662	CITY OF MASSILLON SEWER DEPARTMENT	CITY011	547.69000	No
1/21/2026	096663	COURTSIDE WITH SAMMY B AND LEE	COURT001	5,000.00000	No
1/21/2026	096664	DOMINION EAST OHIO	DOMI001	16,696.62000	No
1/21/2026	096666	EKO SOLUTIONS	EKOS001	343.89000	No
1/21/2026	096667	GLOBAL INDUSTRIAL HEADQUARTERS:	GLOB005	2,838.99000	No
1/21/2026	096668	IRON MOUNTAIN	IRON002	3,000.00000	No
1/21/2026	096669	LIBERTY FORD	LIBE003	656.39000	No
1/21/2026	096657	MEGAN L. BROWN PHOTOGRAPHY	BROW007	2,550.00000	No
1/21/2026	096670	MLK COMMISSION	MLKC001	50.00000	No
1/21/2026	096671	NAACP - STARK COUNTY BR	NAAC001	1,100.00000	No
1/21/2026	096672	OHIO DEPT OF JOB AND FAML	OHIO009	6,691.67000	No
1/21/2026	096673	OHIO EDISON	OHIO011	474.55000	No
1/21/2026	096674	STARK COUNTY SANITARY ENGINEERING	STAR034	357.48000	No
1/21/2026	096675	VERIZON WIRELESS	VERI001	85.28000	No
<b>TOTAL JANUARY CHECKS</b>				<b>49,181.76000</b>	

\*END OF REPORT\*



JANUARY CHECKS-DATE ORDER

Document Date	Document Number	Vendor Name	Vendor ID	Document Amount	Voided
1/21/2026	096655	ALLIANCE WATER UTILITY	ALLI004	218.07000	No
1/21/2026	096656	AMAZON	AMAZ001	799.50000	No
1/21/2026	096657	MEGAN L. BROWN PHOTOGRAPHY	BROW007	2,550.00000	No
1/21/2026	096658	CANTON CITY UTILITIES	CANT011	1,840.45000	No
1/21/2026	096659	CANTON MUNICIPAL COURT	CANT020	973.62000	No
1/21/2026	096660	CFIS GROUP	CFIS001	650.02000	No
1/21/2026	096661	CHAPTER 13 TRUSTEE	CHAP001	1,061.54000	No
1/21/2026	096662	CITY OF MASSILLON SEWER DEPARTMENT	CITY011	547.69000	No
1/21/2026	096663	COURTSIDE WITH SAMMY B AND LEE	COURT001	5,000.00000	No
1/21/2026	096664	DOMINION EAST OHIO	DOMI001	16,696.62000	No
1/21/2026	096665	"DSI MEDICAL SERVICES	DSIM001	3,246.00000	No
1/21/2026	096666	EKO SOLUTIONS	EKOS001	343.89000	No
1/21/2026	096667	GLOBAL INDUSTRIAL HEADQUARTERS:	GLOB005	2,838.99000	No
1/21/2026	096668	IRON MOUNTAIN	IRON002	3,000.00000	No
1/21/2026	096669	LIBERTY FORD	LIBE003	656.39000	No
1/21/2026	096670	MLK COMMISSION	MLKC001	50.00000	No
1/21/2026	096671	NAACP - STARK COUNTY BR	NAAC001	1,100.00000	No
1/21/2026	096672	OHIO DEPT OF JOB AND FAML	OHIO009	6,691.67000	No
1/21/2026	096673	OHIO EDISON	OHIO011	474.55000	No
1/21/2026	096674	STARK COUNTY SANITARY ENGINEERING	STAR034	357.48000	No
1/21/2026	096675	VERIZON WIRELESS	VERI001	85.28000	No
<b>TOTAL JANUARY CHECKS</b>				<b>49,181.76000</b>	

\*END OF REPORT\*



## JANUARY ELECTRONIC PAYMENTS

Document Date	Document Number	Vendor Name	Vendor ID	Document Amount	Voided
1/2/2026	000128412	AMERICAN HERITAGE LIFE INS CO	AMER022	530.64000	No
1/2/2026	000128338	CANTON CITY INCOME TAX	CANT008	11,465.88000	No
1/2/2026	000128286	COLONIAL SUPPLEMENTAL INSURANCE	COLO001	1,146.34000	No
1/2/2026	000128336	INTERNAL REVENUE SERVICE	IRSA002	52,307.32000	No
1/2/2026	000128411	OHIO CSPC	OHIO007	3,634.05000	No
1/2/2026	000128337	OHIO DEPT OF TAXATION	OHIO010	10,848.24000	No
1/2/2026	000128285	OHIO PUBLIC EMPLOYEES	OHIO017	10,890.30000	No
1/15/2026	000128284	RALPH O. LEE - <b>PAYCHECK</b>	RALP003	7,500.00000	No
1/16/2026	000128406	AMERICAN HERITAGE LIFE INS CO	AMER022	519.24000	No
1/16/2026	000128405	CANTON CITY INCOME TAX	CANT008	12,159.78000	No
1/16/2026	000128198	CANTON POLICE PATROLMENS	CANT026	6,294.48000	No
1/16/2026	000128281	COLONIAL SUPPLEMENTAL INSURANCE	COLO001	1,309.65000	No
1/16/2026	000128282	HUNTINGTON BANK - EA1W18	HUNT004	39,223.44000	No
1/16/2026	000128199	METRO CLEVELAND SECURITY INC	METR006	9,693.75000	No
1/16/2026	000128280	OHIO CSPC	OHIO007	3,634.05000	No
1/21/2026	000128403	INTERNAL REVENUE SERVICE	IRSA002	57,763.20000	No
1/21/2026	000128404	OHIO DEPT OF TAXATION	OHIO010	11,841.52000	No
1/21/2026	000128283	OHIO PUBLIC EMPLOYEES	OHIO017	10,950.30000	No
1/29/2026	000128409	OPERS	PERS001	5,926.87000	No
1/29/2026	000128410	OPERS	PERS001	223,068.70000	No
1/30/2026	000128407	OHIO CSPC	OHIO007	3,634.05000	No
1/30/2026	000128408	OHIO PUBLIC EMPLOYEES	OHIO017	16,077.42000	No
<b>TOTAL JANUARY ELECTRONIC PAYMENTS</b>				<b>500,419.22000</b>	

\*END OF REPORT\*



## JANUARY EFT PAYMENTS

Document Date	Document Number	Vendor Name	Vendor ID	Document Type	Document Amount	Voided
1/21/2026	EFT000000010677	AEP OHIO	AEPO001	Payment	40,696.55000	No
1/21/2026	EFT000000010678	AFSCME	AFSC001	Payment	6,560.40000	No
1/21/2026	EFT000000010679	CANTON PEST CONTROL	CANT023	Payment	90.00000	No
1/21/2026	EFT000000010680	CANTON TOWING	CANT059	Payment	1,812.50000	No
1/21/2026	EFT000000010681	CONSUMER DRIVEN ADMINISTRATORS LLC	CDA001	Payment	470.00000	No
1/21/2026	EFT000000010682	CINTAS	CINT001	Payment	3,019.45000	No
1/21/2026	EFT000000010683	CITIZENS FOR SARTA	COMM001	Payment	397.00000	No
1/21/2026	EFT000000010684	CUMMINS SALES AND SERVICE	CUMM002	Payment	9,433.29000	No
1/21/2026	EFT000000010685	HEARTLAND EXPERT AUTOMOTIVE NAPA	DONS001	Payment	637.82000	No
1/21/2026	EFT000000010686	D & W DIESEL INC	DWDI001	Payment	902.00000	No
1/21/2026	EFT000000010687	EMPLOYER HCS	EHCS001	Payment	11,079.04000	No
1/21/2026	EFT000000010688	ELDORADO NATIONAL - CALIFORNIA	ELDO001	Payment	1,078.58000	No
1/21/2026	EFT000000010689	ETC TECH SOLUTIONS	ETCT001	Payment	27,543.60000	No
1/21/2026	EFT000000010690	FINGER LAKES SYSTEM CHEMSITRY	FING001	Payment	777.60000	No
1/21/2026	EFT000000010691	GILLIG LLC	GILL001	Payment	36,138.55000	No
1/21/2026	EFT000000010692	THE GLASS STATION	GLAS001	Payment	1,000.00000	No
1/21/2026	EFT000000010693	GRAPHIC ENTERPRISES INC	GRAP001	Payment	610.03000	No
1/21/2026	EFT000000010694	HEALTH TP OF OHIO	HEAL004	Payment	440,000.00000	No
1/21/2026	EFT000000010695	INDEPENDENT ELEVATOR CO.	INDE005	Payment	221.00000	No
1/21/2026	EFT000000010696	JR COLEMAN FAMILY SERVICES	JRCO001	Payment	500.00000	No
1/21/2026	EFT000000010697	KWGD	KRUG001	Payment	2,485.00000	No
1/21/2026	EFT000000010698	LUCAS LIVE MEDIA	LUCA002	Payment	750.00000	No
1/21/2026	EFT000000010699	M CONLEY	MCON001	Payment	735.86000	No
1/21/2026	EFT000000010700	MEDICAID BILLING SOLUTIONS INC	MEDI004	Payment	400.00000	No
1/21/2026	EFT000000010701	MOBILE SCREEN OF OHIO	MOBI004	Payment	700.00000	No
1/21/2026	EFT000000010702	MOHAWK MFG. & SUPPLY CO.	MOHA001	Payment	8,847.43000	No
1/21/2026	EFT000000010703	MSC INDUSTRIAL SUPPLY CO	MSCI001	Payment	1,980.83000	No
1/21/2026	EFT000000010704	MUNCIE RECLAMATION & SPLY	MUNC001	Payment	68.12000	No
1/21/2026	EFT000000010705	OHIO AFSCME CAREPLAN	OHIO002	Payment	11,282.25000	No
1/21/2026	EFT000000010706	PEOPLE	PEOP001	Payment	26.61000	No
1/21/2026	EFT000000010707	PLANETERIA MEDIA	PLAN001	Payment	7,702.80000	No
1/21/2026	EFT000000010708	PROTECH SECURITY INC	PROT003	Payment	485.18000	No
1/21/2026	EFT000000010709	PUBLIC SALT COMPANY	PUBL003	Payment	4,382.56000	No
1/21/2026	EFT000000010710	RALPH C. WILLIAMS INC	RALP001	Payment	215.02000	No
1/21/2026	EFT000000010711	REDMONDS PARTS & SUPPY INC.	REDM001	Payment	1,093.15000	No
1/21/2026	EFT000000010712	SABILITY HCM SERVICES	SABI001	Payment	575.00000	No
1/21/2026	EFT000000010713	"SCHULMAN	SCHU002	Payment	8,460.00000	Yes
1/21/2026	EFT000000010714	SILCO	SILC001	Payment	941.85000	No
1/21/2026	EFT000000010715	STALEY TECH INC	STAL001	Payment	926.45000	No

1/21/2026	EFT000000010716	STANDARD PLUMBING AND HEAT	STAN001	Payment	1,590.00000	No
1/21/2026	EFT000000010717	TESCO	TESC001	Payment	2,705.54000	No
1/21/2026	EFT000000010718	UNIFIRST CORPORATION	UNIF001	Payment	332.00000	No
1/21/2026	EFT000000010719	UPS FREIGHT	UPSF001	Payment	106.35000	No
1/21/2026	EFT000000010720	VESCO OIL	VESC001	Payment	8,830.80000	No
1/21/2026	EFT000000010721	WDJQ FM RADIO STATION	WDJQ001	Payment	2,680.00000	No
1/21/2026	EFT000000010722	WHBC	WHBC001	Payment	826.60000	No
1/21/2026	EFT000000010723	W.W. GRAINGER INC.	WWGR001	Payment	169.26000	No
1/21/2026	EFT000000010724	YMCA OF CENTRAL STARK COUNTY	YMCA003	Payment	2,531.95000	No
1/21/2026	EFT000000010725	FIRST CHRISTIAN CHURCH	FIRS007	Payment	71,239.00000	No
1/28/2026	EFT000000010726	AEP OHIO	AEPO001	Payment	2,062.91000	No
1/28/2026	EFT000000010727	CANTON POLICE PATROLMENS	CANT026	Payment	5,066.60000	No
1/28/2026	EFT000000010728	CUMMINS SALES AND SERVICE	CUMM002	Payment	30,496.20000	No
1/28/2026	EFT000000010729	GFORCE TECHNOLOGY CONSULTING LLC	GFOR001	Payment	50,293.00000	No
1/28/2026	EFT000000010730	JEFF JAMISON - TOOL ALLOWANCE	JAMI001	Payment	800.00000	No
1/28/2026	EFT000000010731	ROBERT KOVACSISS - TOOL ALLOWANCE	KOVA001	Payment	208.10000	No
1/28/2026	EFT000000010732	METRO CLEVELAND SECURITY INC	METR006	Payment	9,486.95000	No
1/28/2026	EFT000000010733	RALPH O. LEE - PAYCHECK	RALP003	Payment	7,500.00000	No
1/28/2026	EFT000000010734	THOMAS SHAHEEN - TOOL ALLOWANCE	SHAH002	Payment	485.01000	No
1/28/2026	EFT000000010735	SHAUN STEPHENS - TOOL ALLOWANCE	STEP005	Payment	800.00000	No
<b>TOTAL JANUARY EFTs</b>					<b>833,235.79000</b>	

\*END OF REPORT\*

Project Name	Grant Number	Deadline to Use	Federal Share	Year	Funded Amount	Total Draws	Remaining Balance	Remaining Local Share
FY22 OTPP- bus	OH-2021-001-00	12/31/2027	80%	2022	\$ 108,000.00	\$ (25,600.00)	\$ 82,400.00	\$ 20,600.00
FY22 OTPP- Expansion of Hydrogen Tank	OH-2021-001-00	12/31/2027	80%	2022	\$ 1,280,000.00	\$ -	\$ 1,280,000.00	\$ 320,000.00
FY23 OTPP2 TVM Machines	OH-2021-001-00	12/31/2027	80%	2023	\$ 148,000.00	\$ (126,446.00)	\$ 21,554.00	\$ 5,388.50
FY23 CR Hydrogen Paratransit Bus and Add-ons	OH-2021-001-00	12/31/2027	79%	2023	\$ 422,650.00	\$ -	\$ 422,650.00	\$ 112,350.00
FY24 OTP2 Gateway Construction/Renovation	OH-2021-001-00	12/31/2027	80%	2024	\$ 2,000,000.00	\$ (1,931,056.00)	\$ 68,944.00	\$ 17,236.00
FY24 OTP2 Garage Safety Harness/Portable Lifts	OH-2021-001-00	12/31/2027	80%	2024	\$ 160,000.00	\$ -	\$ 160,000.00	\$ 40,000.00
					<b>\$ 4,118,650.00</b>	<b>\$ (2,083,102.00)</b>	<b>\$ 2,035,548.00</b>	<b>\$ 515,574.50</b>
FY24 OWMP Regional Pass Feasibility Study	OH-2021-001-00	3/30/2029	80%	2029	\$ 158,240.00	\$ -	\$ 158,240.00	\$ 13,186.67
					<b>\$ 158,240.00</b>	<b>\$ -</b>	<b>\$ 158,240.00</b>	<b>\$ 13,186.67</b>
FY25 OTP2 Transit Development Plan	OH-2021-001-00	3/30/2029	80%	2029	\$ 160,000.00	\$ -	\$ 160,000.00	\$ 40,000.00
					<b>\$ 160,000.00</b>	<b>\$ -</b>	<b>\$ 160,000.00</b>	<b>\$ 40,000.00</b>
FY21 5307 CNG FACILITY	OH-2021-046-00	9/30/2026	80%	2021	\$ 1,877,740.00	\$ (1,849,199.00)	\$ 28,541.00	\$ 7,135.25
FY21 5307 HYDRO STATION	OH-2021-046-00	9/30/2026	80%	2021	\$ 366,936.00	\$ (6,480.00)	\$ 360,456.00	\$ 90,114.00
FY21 5307 TRANSIT ENHANSMENT	OH-2021-046-00	9/30/2026	80%	2021	\$ 167,260.00	\$ (166,620.00)	\$ 640.00	\$ 160.00
FY21 5307 SOFTWARE	OH-2021-046-00	9/30/2026	80%	2021	\$ 244,000.00	\$ (164,648.00)	\$ 79,352.00	\$ 19,838.00
FY21 5307 HARDWARE	OH-2021-046-00	9/30/2026	80%	2021	\$ 28,000.00	\$ (19,392.00)	\$ 8,608.00	\$ 2,152.00
					<b>\$ 2,683,936.00</b>	<b>\$ (2,206,339.00)</b>	<b>\$ 477,597.00</b>	<b>\$ 119,399.25</b>
FY 21 MERCY OPERATING	OH-2021-036-00	3/31/2026	100%	2021	\$ 37,894.00	\$ (3,675.00)	\$ 34,219.00	\$ -
					<b>\$ 37,894.00</b>	<b>\$ (3,675.00)</b>	<b>\$ 34,219.00</b>	<b>\$ -</b>
FY22 5307 Software	OH-2022-030-00	3/30/2029	80%	2022	\$ 869,600.00	\$ (70,101.00)	\$ 799,499.00	\$ 199,874.75
FY22 5307 Phone Service upgrade	OH-2022-030-00	3/30/2029	80%	2022	\$ 96,000.00	\$ (37,444.00)	\$ 58,556.00	\$ 14,639.00
					<b>\$ 965,600.00</b>	<b>\$ (107,545.00)</b>	<b>\$ 858,055.00</b>	<b>\$ 214,513.75</b>
FY23 5307 Transit Enhancements	OH-2022-030-00	3/30/2029	80%	2023	\$ 52,304.00	\$ (43,511.00)	\$ 8,793.00	\$ 2,198.25
FY 23 5307 Hardware	OH-2022-030-00	3/30/2029	80%	2023	\$ 96,000.00	\$ (67,703.00)	\$ 28,297.00	\$ 7,074.25
FY 23 5307 Software	OH-2022-030-00	3/30/2029	80%	2023	\$ 724,741.00	\$ (1,400.00)	\$ 723,341.00	\$ 180,835.25
					<b>\$ 873,045.00</b>	<b>\$ (112,614.00)</b>	<b>\$ 760,431.00</b>	<b>\$ 190,107.75</b>
FY24 5307 Hardware	OH-2022-030-00	3/30/2029	80%	2024	\$ 80,000.00	\$ (22,092.12)	\$ 57,907.88	\$ 14,476.97
FY24 5307 Software/ERP	OH-2022-030-00	3/30/2029	80%	2024	\$ 792,906.00	\$ (257,563.00)	\$ 535,343.00	\$ 133,835.75
FY24 5307 35'Bus Replacement	OH-2022-030-00	3/30/2029	80%	2024	\$ 457,759.00	\$ -	\$ 457,759.00	\$ 114,439.75
FY24 5307 Transit Enhancements	OH-2022-030-00	3/30/2029	80%	2024	\$ 64,000.00	\$ -	\$ 64,000.00	\$ 16,000.00
FY24 5307 Security	OH-2022-030-00	3/30/2029	80%	2024	\$ 54,383.00	\$ (12,815.00)	\$ 41,568.00	\$ 10,392.00
FY 24 5339 35' Bus Replacement	OH-2022-030-00	3/30/2029	80%	2024	\$ 476,646.00	\$ -	\$ 476,646.00	\$ 125,633.25
FY25 5339 35 Ft Bus	OH-2022-030-00	3/30/2029	80%	2025	\$ 502,533.00	\$ -	\$ 502,533.00	\$ 125,633.25
					<b>\$ 2,428,227.00</b>	<b>\$ (292,470.12)</b>	<b>\$ 2,135,756.88</b>	<b>\$ 540,410.97</b>
FY23 5310 SARTA Van	OH-2022-036-00	8/28/2026	80%	2023	\$ 100,000.00	\$ -	\$ 100,000.00	\$ 25,000.00
					<b>\$ 100,000.00</b>	<b>\$ -</b>	<b>\$ 100,000.00</b>	<b>\$ 25,000.00</b>

FY24 5310 FCC Operating	OH-2022-036-00	8/28/2026	100%	2024	\$ 72,750.00	\$ (37,737.80)	\$ 35,012.20	\$ -
FY24 5310 SARTA	OH-2022-036-00	8/28/2026	80%	2024	\$ 125,000.00	\$ -	\$ 125,000.00	\$ 31,250.00
FY24 5310 TWI Capital	OH-2022-036-00	8/28/2026	100%	2024	\$ -	\$ -	\$ 62,500.00	
FY24 5310 TWI Operating	OH-2022-036-00	8/28/2026	100%	2024	\$ -	\$ -	\$ 10,250.00	
<hr/>								
FY23 LoNo 2 -40' Electric Buses	OH-2023-016-00	3/30/2027	85%	2023	\$ 2,077,527.71	\$ -	\$ 2,077,527.71	\$ 366,622.54
FY23 LoNo Gaseous Monitors	OH-2023-016-02	3/30/2027	90%	2023	\$ 287,118.00	\$ (266,354.00)	\$ 20,764.00	\$ 5,191.00
FY 23 LoNO Workforce Development	OH-2023-016-00	3/30/2027	80%	2023	\$ 62,400.00	\$ -	\$ 62,400.00	\$ 15,600.00
FY LoNo Electric Chargers	OH-2023-016-00	3/30/2027	90%	2023	\$ 271,544.00	\$ -	\$ 271,544.00	\$ 30,171.56
					<b>\$ 2,698,589.71</b>	<b>\$ (266,354.00)</b>	<b>\$ 2,432,235.71</b>	<b>\$ 417,585.09</b>
<hr/>								
NEOride EZConnect	OH-2023-030-00	10/30/2026	100%	2023	\$ 1,250,000.00	\$ (249,733.85)	\$ 1,000,266.15	\$ -
					<b>\$ 1,250,000.00</b>	<b>\$ (249,733.85)</b>	<b>\$ 1,000,266.15</b>	<b>\$ -</b>
<hr/>								
FY23 SMART Grant Accident Avoidance	69A3552441029		100%	2029	\$ 1,975,000.00	\$ (15,124.75)	\$ 1,959,875.25	\$ -
					<b>\$ 1,975,000.00</b>	<b>\$ (15,124.75)</b>	<b>\$ 1,959,875.25</b>	<b>\$ -</b>
<hr/>								
FY25 OWMP Bus Replacement 40ft	OH-2025-013-00	6/30/2030	80%		\$ 549,570.00	\$ -	\$ 549,570.00	\$ 137,392.50
FY25 OWMP Bus Replacement 35ft	OH-2025-013-00	6/30/2030	80%		\$ 2,165,086.00	\$ -	\$ 2,165,086.00	\$ 541,271.50
FY25 OWMP Bus Replacement <30ft	OH-2025-013-00	6/30/2030	80%		\$ 660,000.00	\$ -	\$ 660,000.00	\$ 165,000.00
FY25 OWMP Transit Enhancement-transit stations	OH-2025-013-00	6/30/2030	80%		\$ 240,000.00	\$ -	\$ 240,000.00	\$ 60,000.00
FY25 OWMP ADP Hardware	OH-2025-013-00	6/30/2030	80%		\$ 328,500.00	\$ -	\$ 328,500.00	\$ 82,125.00
FY 25 DERG 35ft CNG	OH-2025-013-00	6/30/2030	80%		\$ 531,530.00	\$ -	\$ 531,530.00	\$ 132,882.00
FY25 OWMP Micro Transit( Pro-line plus)	OH-2025-013-00	6/30/2030	50%		\$ 500,000.00	\$ -	\$ 500,000.00	\$ 500,000.00
FY 25 5307 Transit Enhancements(17m grant)	OH-2025-013-00	6/30/2030	80%		\$ 56,478.00	\$ -	\$ 56,478.00	\$ 14,119.50
					<b>\$ 5,031,164.00</b>	<b>\$ -</b>	<b>\$ 5,031,164.00</b>	<b>\$ 1,632,790.50</b>
<hr/>								
Fy 24 Lono Gateway Main Office Upgrades	OH-2025-016-00	6/1/2029	80%	2024	\$ 4,343,629.60	\$ -	\$ 4,343,629.60	\$ 1,085,907.40
Fy 24 LONO Hillside Driveway Facility Upgrade	OH-2025-016-00	6/1/2029	80%	2024	\$ 887,228.00	\$ -	\$ 887,228.00	\$ 221,807.00
FY 24 LONO Electrolyzer System Installation	OH-2025-016-00	6/1/2029	80%	2024	\$ 419,318.40	\$ -	\$ 419,318.40	\$ 104,829.60
FY 24 LoNO Gateway Asphalt/Circulation Upgrades	OH-2025-016-00	6/1/2029	80%	2024	\$ 712,496.80	\$ -	\$ 712,496.80	\$ 178,124.20
FY 24 Lono Gateway Roof Repair and upgrade for Solar	OH-2025-016-00	6/1/2029	80%	2024	\$ 1,644,414.40	\$ -	\$ 1,644,414.40	\$ 411,103.60
Fy24 LoNo Cornerstone Roof Repair and upgrade for Solar	OH-2025-016-00	6/1/2029	80%	2024	\$ 960,000.00	\$ -	\$ 960,000.00	\$ 240,000.00
FY 24 Lono Solar System Procuremnt and Installation	OH-2025-016-00	6/1/2029	80%	2024	\$ 2,939,766.40	\$ -	\$ 2,939,766.40	\$ 734,941.60
Fy 24 LoNo Workforce Development	OH-2025-016-00	6/1/2029	80%	2024	\$ 699,193.60	\$ -	\$ 699,193.60	\$ 174,798.40
FY 24 LONO Bus and Bus Facilities Admin Cost	OH-2025-016-00	6/1/2029	80%	2024	\$ 454,992.80	\$ -	\$ 454,992.80	\$ 113,748.20
Fy 24 LoNo Electrolyzer System Installation	OH-2025-016-00	6/1/2029	80%	2024	\$ 4,193,189.60	\$ -	\$ 4,193,189.60	\$ 1,048,297.40
					<b>\$ 17,254,229.60</b>	<b>\$ -</b>	<b>\$ 17,254,229.60</b>	<b>\$ 4,313,557.40</b>
<hr/>								
FY22 UTP- Upgrade Hydrogen Tank- Local Match	TUTP-0084-GRF-221		100%	2022	\$ 500,000.00	\$ (210,664.70)	\$ 289,335.30	
					<b>\$ 500,000.00</b>	<b>\$ (210,664.70)</b>	<b>\$ 289,335.30</b>	
<hr/>								
FY-24 UPT Administration Facility Furniture (Mass&Gate)	TUTP-0084-GRF-242		100%	2024	\$ 260,000.00	\$ (259,097.52)	\$ 902.48	
					<b>\$ 260,000.00</b>	<b>\$ (259,097.52)</b>	<b>\$ 902.48</b>	
<hr/>								
FY 25 UTP Accounting System (ERP)	TUTP-0084-GRF-251		100%	2024	\$ 691,365.00	\$ (470,361.20)	\$ 221,003.80	
					<b>\$ 691,365.00</b>	<b>\$ (470,361.20)</b>	<b>\$ 221,003.80</b>	<b>\$ -</b>

FY26 OTP2 LONO Match	OTPP-0084-GRF-261	100%		\$ 294,468.00	\$ -	\$ 294,468.00	
FY26 OTP2 Operating Match	OTPP-0084-GRF-261	100%		\$ 650,000.00	\$ -	\$ 650,000.00	
FY26 OTP2 PM Match	OTPP-0084-GRF-261	100%		\$ 350,000.00	\$ (274,379.75)	\$ 75,620.25	
				<b>\$ 1,294,468.00</b>	<b>\$ (274,379.75)</b>	<b>\$ 1,020,088.25</b>	
FY28 CR Hydorgen Paratransit Bus and Add-ons	Awarded	79%	2028	\$ 422,650.00	\$ -	\$ 422,650.00	\$ 112,350.00
				<b>\$ 422,650.00</b>	<b>\$ -</b>	<b>\$ 422,650.00</b>	<b>\$ 112,350.00</b>
FY25 5310 Operating Awards	Awarded	100%		\$ 30,000.00	\$ -	\$ 30,000.00	\$ -
FY25 5310 Capital Awards	Awarded	100%		\$ 298,048.00	\$ -	\$ 298,048.00	\$ -
FY25 5310 SARTA Van	Awarded	80%		\$ 125,000.00	\$ -	\$ 125,000.00	\$ 31,250.00
FY25 5310 MM	Awarded	50%		\$ 7,739.00	\$ -	\$ 7,739.00	\$ 7,739.00
				<b>\$ 460,787.00</b>	<b>\$ -</b>	<b>\$ 460,787.00</b>	<b>\$ 38,989.00</b>
FY26 OTP2 LoNo A&E	Awarded	80%		\$ 312,500.00	\$ -	\$ 312,500.00	\$ 78,125.00
FY26 OTP2 PM	Awarded	80%		\$ 1,462,685.00	\$ -	\$ 1,462,685.00	\$ 365,671.25
				<b>\$ 1,775,185.00</b>	<b>\$ -</b>	<b>\$ 1,775,185.00</b>	<b>\$ 443,796.25</b>
FY28 CMAQ 3 CNG Paratransits	Awarded	79%+10% TRC	2028	\$ 667,500.00	\$ -	\$ 667,500.00	\$ 82,500.00
FY29 CMAQ 3 CNG Paratransits	Awarded	79%+10% TRC	2029	\$ 667,500.00	\$ -	\$ 667,500.00	\$ 82,500.00
				<b>\$ 1,335,000.00</b>	<b>\$ -</b>	<b>\$ 1,335,000.00</b>	<b>\$ 165,000.00</b>

	Local Share to be		
	Remaining Grant Funding	provided by SARTA	Local Share from Grants
Operating PM			\$ 650,000.00
			\$ 75,620.25
Mobility Management	\$ 7,739.00	\$ 7,739.00	
Buses	\$ 9,802,362.71	\$ 2,111,213.09	
Neoride-Pass through	\$ 3,180,781.40	\$ 28,786.67	
5310-Pass through			
5310-Sarta administration( Employee time)	\$ 45,271.00		
17 Million Lono Project	\$ 17,693,054.08	\$ 4,423,037.90	\$ 294,468.00
Transit Enhancements	\$ 313,433.00	\$ 78,358.25	
IT(software+Hardware)	\$ 2,640,957.88	\$ 660,239.47	\$ 221,003.80
Planning( TDP)	\$ 160,000.00	\$ 40,000.00	
Pro-Line plus Operating( New service- can not reapply for)	\$ 500,000.00	\$ 500,000.00	
Hydrogen Tank	\$ 1,640,456.00	\$ 410,114.00	\$ 289,335.30
CNG	\$ 49,305.00	\$ 12,326.25	
Security	\$ 41,568.00	\$ 10,392.00	
Garage harness/Lifts	\$ 160,000.00	\$ 40,000.00	
<b>Totals</b>	<b>\$ 36,234,928.07</b>	<b>\$ 8,322,206.63</b>	<b>\$ 1,530,427.35</b>

# Planning

Clayton Popik  
Director





## PLANNING REPORT JANUARY 2026

### Projects

---

#### Queue:

Projects in the queue include garage roof replacement, a hillside driveway, asphalt replacement at Gateway, and renovation of the Operations Building (aka the Original Administration Building).

### Service Planning

---

#### February Service Changes:

Our most recent bid went into effect on February 9<sup>th</sup>. This includes the additional service being added to the Canal Fulton area. We have had several interested residents who would like to learn about D2D, Proline Plus, and Community Coach. Nobody has ridden as of this writing, but that was to be expected. SARTA had been absent from the area for so long that they had found other ways to get around, and it will take us a moment to reestablish ourselves.

Robin attended BINGO at the Senior Center both days last week to answer questions. We will reach out to schedule times to be at the Canal Fulton Public Library and the YMCA. We will also provide parking lot loops for their Canal Day event later this summer.

Ralph, Mark, Joe, Chris, and I travelled to Columbus on the 12<sup>th</sup> to speak with ODOT and COTA about initiatives and funding. We have been doing this with other transit providers, such as METRO and PARTA, as we continue planning to move SARTA forward and improve transit in Stark County. The ODOT visit was essential, as we all left feeling we had repaired a damaged relationship, which would have been problematic for SARTA's future funding.

### Procurement

---

#### Architectural & Engineering Services:

We currently have a Request for Proposals out for architectural & engineering services. Our last procurement was a five-year task-order-based agreement held by Richard L. Bowen & Associates in Cleveland. They have been a great firm to work with and are well-versed in public transit needs. However, the FTA encourages us to solicit proposals periodically to ensure we are not eliminating competition by not seeking other vendors. This gives other firms an opportunity to submit their qualifications for our evaluation. It is convenient to have a firm on hand, as they help with A/E questions that arise, even when there is no active project. With five

properties to maintain, SARTA benefits from the ability to easily obtain professional assessments. We have received two submissions this week and will begin the review process later this week or next.

### **Construction Management Services:**

In a similar Request for Proposals (RFP), we will be issuing an update to our Construction Management agreement. This was another 5-year agreement that expired upon completion of the buildings. This is done on an individual task order basis as well, but agencies are encouraged to seek all competition through the formal bidding process. These firms help SARTA oversee large projects, such as the Massillon Transit Center, by being on-site every day when SARTA staff are not.

## **Grants**

---

### **Vehicle Replacement:**

We have begun meeting with Transportation and Finance to discuss the best way to establish a more consistent vehicle replacement schedule.

### **Project Management:**

Chris will continue to help me work with Finance to establish a strong project timeline to spend down Federal grants, carefully budget the local match, and move some of the above-named projects out of the queue.

One of the biggest hurdles we have overcome is securing FTA approval to retain the \$17.3 million Lo/No grant we received in 2024. We requested the removal of the solar and electrolyzer, which also resulted in the removal of the workforce development portion. These remaining dollars can be allocated to the following projects: the second Gateway driveway, original building renovations, garage roof replacement, and paving of the old parking lot.

### **BUILD Grant:**

Now that we received board approval earlier this month to apply for the Better Utilizing Investments to Leverage Development (BUILD) program, we have begun the application process. This grant is 100% federal dollars and will be used to renovate the Cornerstone Transit Center in downtown Canton, the central hub and focal point of SARTA's entire transit network. We have received a preliminary estimate from Bowen of approximately \$9.5 million to renovate and add to the original building, updating its layout to better serve driver and customer service staff, and expanding the passenger waiting and facilities area. A community room is planned to serve SARTA and other nonprofits that may need meeting space downtown. An additional \$1- \$2 million is requested for updates to the bus area to ensure the canopies match the building's aesthetic, concrete replacement, and construction of an additional parking lot on the abandoned lot to the east.

# Customer Relations

Latrice Virola  
Director



# Social Media Community Engagement – Monthly Snapshot

Supporting Services, Events & Public Communication

Key Metric	Monthly Result
Total Reach	31,461
Engagement Rate – 3% - 6% is very strong	3.7%
Shares – Trust and usefulness	268
Link Clicks	1,332
Audience Growth – Long term communication capacity	8,789

Platform	Reach – Information access	Engagement – Relevance and clarity	Clicks - Service Access
Facebook	30,881	1.89%	1,182
Twitter (X)	17	2.1%	0
Instagram	1,043	7.6%	30
LinkedIn	398	2.34%	70
YouTube	1,039	2.9%	0

## What This Means

- Instagram is the platform where we get the most engagement
- Facebook is the platform where we get the least engagement
- Social media continues to be a dependable and effective communication channel.

# Sartaonline.com January 2026 Snapshot

## AT-A-GLANCE

Users: 9,784 ↑ from last month

Sessions (How often people come to the website): 14,823

Engagement Rate: 45.95%



We have been working to update the information on the website to increase our engagement rate.

Forms Submitted: 1,890

Downloads: 2,020

Clicks: 854

## TRAFFIC SOURCES (How people got to our website)

Social: 79.45% Search: 63.28% Direct: 28.89%

## TOP PAGES ACCESSED

1. SARTA's Home Page
2. Getting Around/Fixed Routes/

## ACCESS SOURCE

Mobile: 49.21% Desktop: 49.68% Tablet: 1.12%

# January 2026 Summary

## ENGAGEMENT ACTIVITIES

Date	Event / Outreach Activity	Location / Partner	Outcome / Reach
1/7/2026	Meeting with Bill Green	Stark County Board of DD	CEO, Director of Planning, COO and the Director of Customer Relations had a touch base meeting to get feedback on the relationship between SARTA and the DD Board
1/8/2026	Safe Communities Meeting	Stark County Sheriff Department	Over 20 different community partners are part of this committee along with SARTA
1/8/2026	Let's Do Lunch Series	Arts in Starks	Engaged with community members
1/8/2026	Meeting with Jeff Talbert and staff	Canton City Schools	CEO, Director of Planning, COO and the Director of Customer Relations had a touch base meeting to get feedback on the relationship between SARTA and Canton City Schools
1/13/2026	Leopard Leap Transition Fair	Louisville High School	Engaged with students and shared information on SARTA services
1/13/2026	United Way Impact Council	United Way of Stark Carroll	Over 15 different community partners are part of this council along with SARTA's Director of Customer Relations
1/15/2026	33 <sup>rd</sup> annual MLK, Jr Mayors' Breakfast	The Greater Canton MLK Jr Commission	The Customer Relations Director served on the planning committee and attend the event
1/15/2026	Winter Showcase	STEAMM Academy @Hartford	COO and Maintenance Tech interacted with community members and discuss SARTA Hydrogen Fuel Cell activities

# Information Technology

Craig Smith  
Director





**SARTA**  
**PROJECT REPORT**  
**January 2026**

PROJECT NAME	PURPOSE	PHASE	COST	COMPLETE
<b>Enterprise Resource Planning (ERP) Software Replacement</b>	SARTA will be replacing its current ERP system (Microsoft Dynamics GP 2016 R2) with a modern, intuitive, and customizable system. The ERP RFP is currently out, and proposals are due by Feb. 12 <sup>th</sup> , 2024.	Active	\$1.9 M	86%
<b>Onsite Yard Management</b>	SARTA will be implementing Trapeze's state-of-the-art Ultra-Wideband (UWB) yard location technology. The features provided by this real-time location system ("RTLS") technology enable vehicle location throughout the fixed-bus parking and maintenance facility coverage areas, as well as augmentation of vehicle position at Gateway.	Active	\$704,000	90%
<b>Trapeze Workforce Management (OPS)</b>	Trapeze Workforce Management is a fully optimized solution to manage the transit workforce, empowering our team to meet ever-changing service and rider demands and to maximize operational and cost controls.	Active	\$558,325	67%

# Enterprise Resource Planning Software Replacement

---

## Project Description and Scope:

SARTA will be replacing its current ERP system (Microsoft Dynamics GP 2016 R2) with a modern, intuitive, and customizable system.

<b>Project Approval:</b>	10/25/2023	<b>Project Manager:</b>	Craig Smith
<b>Estimated Project Cost:</b>	\$1,900,000		
<b>Execution Project Cost:</b>	1.9M	<b>Execution Cost to Date:</b>	\$1,750,000
<b>Execution Start:</b>	8/28/2024	<b>Execution End:</b>	4/19/2026
<b><u>Funding Source for Project Cost</u></b>		<b><u>Vendor(s)</u></b>	
Federal award	80%	Infor	Trapeze Group
Local match	20%	GForce	TruOptions Associates

## Project Status:

With the proof-of-concept completed in April, the Conference Room Pilot (CRP) was completed in July. Even though CRP is complete, a few questions and concerns are still being addressed. However, we are continuing to configure and test integrations between Infor CloudSuite and other software packages SARTA uses. This is a very important and time-consuming process, as each integration undergoes rigorous testing to ensure correctness and consistency.

The team has been working on the Trapeze EAM and Genfare integrations. This testing will verify the validity of the integrations among these systems. Trapeze EAM contains information on SARTA's fleet, including repair costs, work orders, and fluids for all SARTA vehicles. Genfare software encapsulates SARTA's fare sales from APOS, fareboxes, TVMs, and other systems. The integration of these software systems will bring this data into the ERP and provide SARTA with a clear, complete view of its finances.

The team is currently in UAT (User Acceptance Testing). This phase began on January 19<sup>th</sup>. Each member has their own test scripts to run daily. This process is used to have real end users (the financial team) validate that Infor CloudSuite FSM meets SARTA's actual business needs and works as expected in real-world scenarios. Ensuring the system is ready for production by confirming its functionality, usability, and alignment with business requirements before go-live launch, ultimately boosting user satisfaction and product value.

Users have been added to the Infor test, training, and production environments. Go-live is currently scheduled for April 19<sup>th</sup>.

# Onsite Yard Management Solution

---

## Project Description and Scope:

The primary goal of this project is to implement the Yard Management solution at our Gateway facility, which will be accomplished by deploying new Yard Manager RTLS Software and Hardware. This solution will enable the vehicle locating technology within the Gateway facility to provide real-time vehicle location data.

At the Gateway facility, the Yard Manager solution will strengthen the overall efficiency of SARTA’s transit operation by:

- Providing accurate location information for vehicles inside the Gateway facility parking and maintenance areas, thus eliminating the need for manual yard walks and enabling staff to quickly find assigned vehicles for pull-out or maintenance
- Automatically populating the parking grid in Workforce Management/OPS with the locations of parked vehicles inside the Gateway facility, eliminating the need to manually enter vehicle locations
- Providing at-a-glance situational awareness by displaying vehicle positions in map and grid views and styling them based on status information
- Tracking key status elements that drive garage performance and service readiness, such as fuel and wash status

<b>Project Approval:</b>	4/24/2024	<b>Project Manager:</b>	Craig Smith
<b>Estimated Project Cost:</b>	\$705,819		
<b>Execution Project Cost:</b>	\$705,819	<b>Execution Cost to Date:</b>	\$641,704
<b>Execution Start:</b>	10/31/2024	<b>Execution End:</b>	8/08/2026
<b><u>Funding Source for Project Cost</u></b>		<b><u>Vendor(s)</u></b>	
Federal award	80%	Trapeze Group / Vontas	
Local match	20%	Hilscher-Clarke	

## Project Status:

The Onsite Yard Management project is mostly complete. However, this software is integrated with the Workforce Management software. Therefore, from February 23rd through March 11th, SARTA will conduct Workforce Management / OPS Training & User Acceptance Testing (UAT) on-site. This training will also include User Acceptance Testing for the Onsite Yard Management integration.

SARTA Yard Management staff will also need to complete testing and training. This will ensure that the vehicle assignment, availability tracking, and operational handoffs are functioning properly.

# Trapeze Workforce Management Software (OPS)

---

## Project Description and Scope:

Trapeze Workforce Management is a fully optimized solution to manage the transit workforce, empowering SARTA’s team to meet ever-changing service and rider demands and to maximize operational and cost controls. Trapeze’s Workforce Management solutions help agencies minimize unnecessary time at the garage and be more agile by providing flexibility and real-time updates to support our changing business needs.

Below are several ways in which Trapeze Workforce Management will be helpful to SARTA’s workforce:

- Sign in with contactless badge scans, eliminate walking up to the window to check in, waiting to verbally ask what work you have, and face-to-face communication with dispatch
- Display boards showing pullout time, vehicle assignments, vehicle location, and extra board assignments
- Allow employees to access information 24/7 remotely – work assignment details, review paddles, request absences, check accruals, sign up to volunteer, and even complete bids.
- Can eliminate the need for SARTA’s operators to call dispatch or travel to the garage to fill out paper, minimizing the time commitment for operators, and letting dispatchers focus on ensuring service is delivered on time.
- Push alerts and notifications using email, text/SMS, and online messages to ensure everyone is updated in real-time.
- Keep SARTA’s employees always informed with messages, detours, and documents.

<b>Project Approval:</b>	12/23/2023	<b>Project Manager:</b>	Craig Smith
<b>Estimated Project Cost:</b>	\$558,325		
<b>Execution Project Cost:</b>	\$558,325	<b>Execution Cost to Date:</b>	\$187,820
<b>Execution Start:</b>	10/7/2024	<b>Execution End:</b>	8/08/2026
<b><u>Funding Source for Project Cost</u></b>		<b><u>Vendor(s)</u></b>	
Federal award	80%	Trapeze Group	
Local match	20%		

## Project Status:

From February 23rd through March 11th, SARTA will conduct Workforce Management / OPS Training & User Acceptance Testing (UAT) on-site. This training is for process alignment & operational readiness for SARTA employees. The objective of this training is to enable operational readiness, not simply system familiarity.

Trapeze Implementation Consultants (ICs) will be on-site and work collaboratively with SARTA staff to map existing operational processes to OPS workflows, validate configuration decisions, and ensure the system supports how SARTA operates today—while highlighting opportunities for consistency and efficiency where appropriate.

Given the size of the SARTA, these sessions are designed to train both Subject Matter Experts (SMEs) and end users together, ensuring shared understanding across operational roles and reducing downstream knowledge gaps.

This training will involve all the following roles at SARTA:

- Dispatchers
- Yard Management staff
- Operations supervisors and managers
- Administrative users involved in workforce or timekeeping activities

During UAT, SARTA end users validate that the system meets the requirements and design specifications through real-world scenarios and use cases. UAT confirms that the system supports the full scope and addresses the needs defined in the project.

# Human Resources

Tammy Marie Brown  
Director



# HUMAN RESOURCES

---

## NEW HIRES

Name	Position	Start Date
Bridget Hill	CDL Coach Operator	2-9-26
Da'Vontai Rorie	CDL Coach Operator	2-9-26
Terred Tuck	CDL Coach Operator	2-9-26

## PROMOTIONS/REALIGNED

Name	New Position	Start Date
Lauren Barnes	HR Manager	2-9-26

## CURRENT JOB OPENINGS

Position	Status
CDL Coach Operators	Posted
HR Administrator	Interviewing
Maintenance Technician (Mechanic)	Posted

## RESIGNATIONS, TERMINATIONS, AND PROBATION RELEASES

Retirement	Termination	Layoff	Resigned	Death
1	0	1	4	0

---

## FMLA / Short-Term Disability

### FMLA/Continuous Leave/Transitional work

- 0 on transitional work
- 5 employees on FMLA continuous leave
- 6 employees on FMLA intermittent leave
- 5 employees on Short-Term Disability

## General Human Resources Functions

- The initial vending update has been completed. Fresh food will be in the next phase of the upgrade. As well as upgrading the vending machines in the maintenance break area.
- On January 30, 2026, we hosted a soup lunch as a thank you for weathering the frigid temperatures during the last week of January.
- The uniform website is ready to launch on February 24, 2026. This streamlined process provides uniform ordering for operators, road supervisors, and customer service representatives.
- Human Resources is attending the Greater Stark County Collegiate Interview Day.

---

## Training

- CPR training will continue for all drivers whose licenses expire within the coming months.
- Three (3) New CDL Coach Operators are currently in training and will be tested in the next few weeks.
- One (1) CDL Coach Operator tested last week for her CDL and passed. She will begin driving with drivers next week and then will be on the Extra Board the following week.
- Completed training on the new system on our bus and will begin training drivers next week, so that the bus can begin operating in rotation the following week.

---

## Stark County Safety Council

The Safety Council's February Session was a knowledge game, in the form of Safety Jeopardy, to test and review multiple topics, including Personal Protective Equipment (PPE), Ergonomics, Hazards, and General Workplace Safety. It was a time to reinforce key safety concepts and share real-world experiences amongst a multi-faceted group of professionals from Stark County.

---

## Dr. Work's Clinic

	Target	2025 Total	2024 Total
Show Rate %	>90%	91.2	90.3
C&P Rate %	>67%	89.6	88.5
Capacity Utilization%	>80%	93.3	90.4
Other Data			
Total Visits		776	738
Liberty Visits		28	33
Rx Dispensed		908	860

SARTA faced difficult operating challenges at the start of 2025, and, coming off a record performance year in 2024, the EHCS Clinic at SARTA felt the impact of the difficult business choices SARTA had to make to begin the year. However, careful analysis of the clinic's operating data shows the positive value that SARTA associates with the clinic.

Despite these operating difficulties, actual visits for 2025 were up 5% over 2024. The number of no-shows was statistically unchanged year over year, indicating the value that employees as a group place on the clinic benefit. The percentage of high-value C&P visits was up slightly to 90% from 88% last year and well above the target rate of 67%, indicating that SARTA is capturing a strong share of chronic illness and preventive care from its investment. Prescriptions dispensed increased by 5.6% year over year; this is a significant area of savings. Use of the clinic to reduce costs and limit the risk of future catastrophic claims is strong at SARTA.

SARTA										
DATE	SCHEDULED VISITS	ACTUAL VISITS	CANCELLED/ NO-SHOW	%ACTUAL/ SCHEDULED	ACUTE CASES	CHRONIC/ PREVENTIVE CASES	%C&P	Capacity	Capacity Utilization	Rx Dispensed
2105 Totals	70	66	4	94.29%	16	50	75.76%	160	41.25%	42
2016										
1Q2016 Total	140	123	17	87.86%	24	99	80.49%	208	59.13%	118
2Q2016 Total	160	144	16	90.00%	39	105	72.92%	208	69.23%	161
3Q2016 Total	156	140	16	89.74%	35	105	75.00%	208	67.31%	161
4Q2016 Total	175	151	24	86.29%	33	118	78.15%	192	76.65%	189
2016 Total	631	558	73	88.43%	131	427	76.52%	816	68.38%	629
2017										
1Q2017 Total	153	140	13	91.50%	32	108	77.14%	192	72.92%	133
2Q2017 Total	182	170	12	93.41%	42	128	75.29%	208	81.73%	213
3Q2017 Total	159	147	12	92.45%	24	123	83.67%	192	76.56%	178
4Q2017 Total	224	210	14	93.75%	31	179	85.24%	208	100.96%	250
2017 Total	718	667	51	92.90%	129	538	80.66%	800	83.38%	774
2018										
1Q2018 Total	190	166	24	87.37%	36	130	78.31%	208	79.81%	186
2Q2018 Total	166	150	16	90.36%	45	105	70.00%	208	72.12%	171
3Q2018 Total	140	127	13	90.71%	35	92	72.44%	192	66.15%	177
4Q2018 Total	264	241	23	91.29%	51	51	21.16%	192	125.52%	172
2018 Total	760	684	76	90.00%	167	378	55.26%	800	85.50%	706
2019										
1Q2019 Total	171	161	10	94.15%	31	130	80.75%	208	77.40%	174
2Q2019 Total	187	165	22	88.24%	51	114	69.09%	208	79.33%	200
3Q2019 Total	199	181	18	90.95%	31	150	82.87%	208	87.02%	198
4Q2019 Total	346	317	29	91.62%	72	245	77.29%	208	152.40%	183
2019 Total	903	824	79	91.25%	185	639	77.55%	832	99.04%	755
2020										
1Q2020 Total	179	166	13	92.74%	33	133	80.12%	192	86.46%	197
2Q2020 Total	158	141	17	89.24%	24	117	82.98%	208	67.79%	142
3Q2020 Total	179	165	14	92.18%	23	142	86.06%	208	79.33%	188
4Q2020 Total	211	194	17	91.94%	31	163	84.02%	208	93.27%	190
2020 Total	727	666	61	91.61%	111	555	83.33%	816	81.62%	717
2021										
1Q2021 Total	156	148	8	94.87%	17	131	88.51%	208	71.15%	176
2Q2021 Total	143	136	7	95.10%	15	121	88.97%	208	65.38%	180
3Q2021 Total	228	199	29	87.28%	27	172	86.43%	208	95.67%	211
4Q2021 Total	315	288	27	91.43%	21	267	92.71%	208	138.46%	175
2021 Total	842	771	71	91.57%	80	691	89.62%	832	92.67%	742
2022										
1Q2022 Total	189	175	14	92.59%	16	159	90.86%	208	84.13%	218
2Q2022 Total	158	145	13	91.77%	18	127	87.59%	208	69.71%	168
3Q2022 Total	152	144	8	94.74%	13	131	90.97%	208	69.23%	128
4Q2022 Total	308	280	28	90.91%	29	251	89.64%	224	125.00%	116
2022 Total	807	744	63	92.19%	76	668	89.78%	848	87.74%	630
2023										
1Q2023 Total	149	142	7	95.30%	21	121	85.21%	208	68.27%	159
2Q2023 Total	137	128	9	93.43%	20	108	84.38%	208	61.54%	148
YTD	286	270	16	94.41%	41	229	84.81%	416	64.90%	307
3Q2023 Total	134	120	14	89.55%	18	102	85.00%	208	57.69%	168
YTD	420	390	30	92.86%	59	331	84.87%	624	62.50%	475
4Q2023 Total	327	307	20	93.88%	23	284	92.51%	224	137.05%	185
2023 Total	747	697	50	93.31%	82	615	88.24%	848	82.19%	660
2024										
January Total	56	40	16	71.43%	7	33	82.50%	80	50.00%	77
February Total	53	46	7	86.79%	6	40	86.96%	64	71.88%	68
March Total	79	70	9	88.61%	8	62	88.57%	64	109.38%	65
1Q2024 Total	188	156	32	82.98%	21	135	86.54%	208	75.00%	210
April Total	57	52	5	91.23%	8	44	84.62%	64	81.25%	37
May Total	91	83	8	91.21%	6	77	92.77%	80	103.75%	96
June Total	61	59	2	96.72%	10	49	83.05%	64	92.19%	77
2Q2024 Total	209	194	15	92.82%	24	170	87.63%	208	93.27%	210
YTD	397	350	47	88.16%	45	305	87.14%	416	84.13%	420
July Total	65	65	0	100.00%	7	58	89.23%	80	81.25%	87
August Total	58	51	7	87.93%	2	49	96.08%	64	79.69%	66
September Total	72	72	0	100.00%	8	64	88.89%	64	112.50%	68
3Q2024 Total	195	188	7	96.41%	17	171	90.96%	208	90.38%	221
YTD	592	538	54	90.88%	62	476	88.48%	624	86.22%	641
October Total	91	75	16	82.42%	8	67	89.33%	80	93.75%	59
November Total	83	78	5	93.98%	5	73	93.59%	64	121.88%	86
December Total	51	47	4	92.16%	10	37	78.72%	48	97.92%	74
4Q2024 Total	225	200	25	88.89%	23	177	88.50%	192	104.17%	219
2024 Total	817	738	79	90.33%	85	653	88.48%	816	90.44%	860
2025										
January Total	64	52	12	81.25%	12	40	76.92%	64	81.25%	78
February Total	51	44	7	86.27%	1	43	97.73%	64	68.75%	68
March Total	61	53	8	86.89%	5	48	90.57%	80	66.25%	69
1Q2025 Total	176	149	27	84.66%	18	131	87.92%	208	71.63%	215
April Total	55	53	2	96.36%	6	47	88.68%	80	66.25%	99
May Total	50	49	1	98.00%	4	45	91.84%	64	76.56%	68
June Total	42	39	3	92.86%	5	34	87.18%	64	60.94%	38
2Q2025 Total	147	141	6	95.92%	15	126	89.36%	208	67.79%	205
YTD	323	290	33	89.78%	33	257	88.62%	416	69.71%	420
July Total	74	68	6	91.89%	10	58	85.29%	80	85.00%	94
August Total	39	33	6	84.62%	2	31	93.94%	64	51.56%	37
September Total	71	67	4	94.37%	10	57	85.07%	64	104.69%	88
3Q2025 Total	184	168	16	91.30%	22	146	86.90%	208	80.77%	219
YTD	507	458	49	90.34%	55	403	87.99%	624	73.40%	639
October Total	189	178	11	94.18%	10	168	94.38%	96	185.42%	84
November Total	94	87	7	92.55%	11	76	87.36%	64	135.94%	83
December Total	61	53	8	86.89%	5	48	90.57%	48	110.42%	102
4Q2025 Total	344	318	26	92.44%	26	292	91.82%	208	152.88%	269
2025 Total	851	776	75	91.19%	81	695	89.56%	832	93.27%	908

# Resolutions



**Stark Area Regional Transit Authority**

Resolution # \_\_\_\_\_, 2026

**A Resolution To Recognize Ronald G. Macala's Service As A Board Member Of The Stark Area Regional Transit Authority**

WHEREAS, Ronald G. Macala was initially appointed to the Stark Area Regional Transit Authority Board of Trustees (SARTA) by the Stark County Commissioners in 2008, serving until 2026; and

WHEREAS, Mr. Macala served as a dedicated and committed member by attending and participating in state financial audits, the Records Commission, and providing valuable assistance in the recruitment of law firms to support the mission and objectives of SARTA; and

WHEREAS, Ronald G. Macala was also heavily involved in SARTA's levy campaigns, made substantial contributions to SARTA's strategic planning, helped in hiring searches, aided in updating the bylaws of SARTA's Board of Trustees, participated in the Finance Committee, and assisted with updating SARTA's employee handbooks and policies; and

WHEREAS, Mr. Macala has served as the president of the SARTA Board of Trustees since July 2018; fostered a collaborative environment, leading the board through difficult decisions, and driving meaningful changes that positioned the organization for long-term success;

NOW, THEREFORE, BE IT RESOLVED by the Stark Area Regional Transit Authority Board of Trustees that hereby formally acknowledges and records its appreciation to Ronald G. Macala for his valuable contributions and hereby recognizes him for eighteen (18) years of outstanding service to the Stark Area Regional Transit Authority.

\_\_\_\_\_  
Date

\_\_\_\_\_  
Board President

\_\_\_\_\_  
Secretary-Treasurer

Stark Area Regional Transit Authority

Resolution # \_\_\_\_\_, 2026

A Resolution Dedicating The Gateway Administrative Office Boardroom In Honor Of  
Ronald G. Macala

WHEREAS, Ronald G. Macala has served with distinction, demonstrating exceptional leadership, dedication, and commitment throughout his tenure as a member and leader within the SARTA Board of Trustees; and

WHEREAS, his vision, integrity, and tireless efforts have significantly advanced the mission and goals of the organization, leaving a lasting positive impact on its members, staff, and the community; and

WHEREAS, it is fitting and proper that the Board recognize and honor Ronald G. Macala's outstanding contributions by dedicating a space that reflects his enduring legacy;

NOW, THEREFORE, BE IT RESOLVED that the SARTA Board of Trustees hereby dedicates the Gateway Administrative Office Boardroom to Ronald G. Macala, in recognition of his exemplary leadership, unwavering commitment, and invaluable service; and

BE IT FURTHER RESOLVED, that a commemorative plaque be placed within the boardroom to serve as a lasting tribute to his achievements and the profound difference he has made.

\_\_\_\_\_  
Date

\_\_\_\_\_  
Board President

\_\_\_\_\_  
Secretary-Treasurer

Stark Area Regional Transit Authority

Resolution # \_\_\_\_\_, 2026

**A Resolution Authorizing Greg Blasiman As An Authorized Signer  
On The SARTA Checking Account**

WHEREAS, the Stark Area Regional Transit Authority Board of Trustees has experienced a change in its Board President; and

WHEREAS, Greg Blasiman has been appointed as the new President of the Board and needs to be added as an authorized signer on the SARTA checking account; and

WHEREAS, SARTA requires two (2) signatures on checks exceeding the threshold of one hundred thousand dollars (\$100,000). One signature must be from the current Board President or Vice President, while the other can either be Ralph Lee, Interim CEO/Executive Director, or Joe Wayne, Chief Finance Officer; and

WHEREAS, this action aligns with SARTA's commitment to maintain compliance with financial requirements set by the State of Ohio, ensuring proper checks and balances on all financial matters;

NOW, THEREFORE, BE IT RESOLVED by the Board of Trustees of the Stark Area Regional Authority that Greg Blasiman is hereby authorized to be a designated signer on the SARTA checking account.

\_\_\_\_\_  
Date

\_\_\_\_\_  
Board President

\_\_\_\_\_  
Secretary-Treasurer

Stark Area Regional Transit Authority

Resolution # \_\_\_\_\_, 2026

**A Resolution Appointing Joseph Wayne, Chief Financial Officer, As Secretary-Treasurer**

WHEREAS, the position of Chief Financial Officer (CFO) for the Stark Area Regional Transit (SARTA) has remained unfulfilled, including the vital responsibilities of Secretary-Treasurer; and

WHEREAS, Joseph Wayne was appointed Chief Financial Officer (CFO) of the Stark Area Regional Transit Authority effective December 1, 2025; and

WHEREAS, in accordance with the bylaws of SARTA, the Board of Trustees acknowledges the qualifications and willingness of Joseph Wayne to undertake the role of Secretary-Treasurer of the SARTA Board of Trustees;

NOW, THEREFORE, BE IT RESOLVED by the Board of Trustees of the Stark Area Regional Authority that Joseph Wayne, Chief Financial Officer, be appointed to the distinguished position of Secretary-Treasurer of the SARTA Board of Trustees. In this capacity, he will be entrusted with the essential duties and responsibilities as outlined in the bylaws.

\_\_\_\_\_  
Date

\_\_\_\_\_  
Board President

\_\_\_\_\_  
Secretary-Treasurer

**Stark Area Regional Transit Authority**

**Resolution # \_\_\_\_\_, 2026**

**A Resolution Granting Administrative Access And Financial Authority To**

**Joseph Wayne, Chief Financial Officer**

WHEREAS, Joseph Wayne was appointed Chief Financial Officer (CFO) of the Stark Area Regional Transit Authority effective December 1, 2025, and is deemed qualified to exercise such authority; and

WHEREAS, the Chief Financial Officer must access, manage, and administer all relevant organizational systems, accounts, and records necessary for the performance of his duties; and

WHEREAS, the Chief Financial Officer approves, executes, and authorizes financial transactions, including but not limited to payments, transfers, and contractual commitments, within the limits established by company policy; and

WHEREAS, the Chief Financial Officer represents SARTA in financial matters with banks, vendors, and other third parties as required; and

WHEREAS, the Chief Financial Officer is an authorized signatory for all financial transactions on behalf of the Stark Area Regional Transit Authority (SARTA);

NOW, THEREFORE, BE IT RESOLVED by the Board of Trustees of the Stark Area Regional Transit Authority that Joseph Wayne, Chief Financial Officer, is granted administrative access and financial authority on behalf of the Stark Area Regional Transit Authority (SARTA).

\_\_\_\_\_  
Date

\_\_\_\_\_  
Board President

\_\_\_\_\_  
Secretary-Treasurer

Stark Area Regional Transit Authority  
1600 Gateway Blvd SE  
Canton, Ohio 44707  
(330) 477-2782



[www.sartaonline.com](http://www.sartaonline.com)